

Ćwiakala Joanna<sup>1</sup> (cwiakala.joanna@gmail.com),  
Moskalik Mateusz<sup>1</sup> (mmosk@igf.edu.pl),  
Forwick Matthias<sup>2</sup> (matthias.forwick@uit.no),  
Wojtysiak Kacper<sup>1</sup> (kwojtys@igf.edu.pl),  
Giżewski Jerzy<sup>1</sup> (gizej@igf.edu.pl),  
Szczuciński Witold<sup>3</sup> (witek@amu.edu.pl)

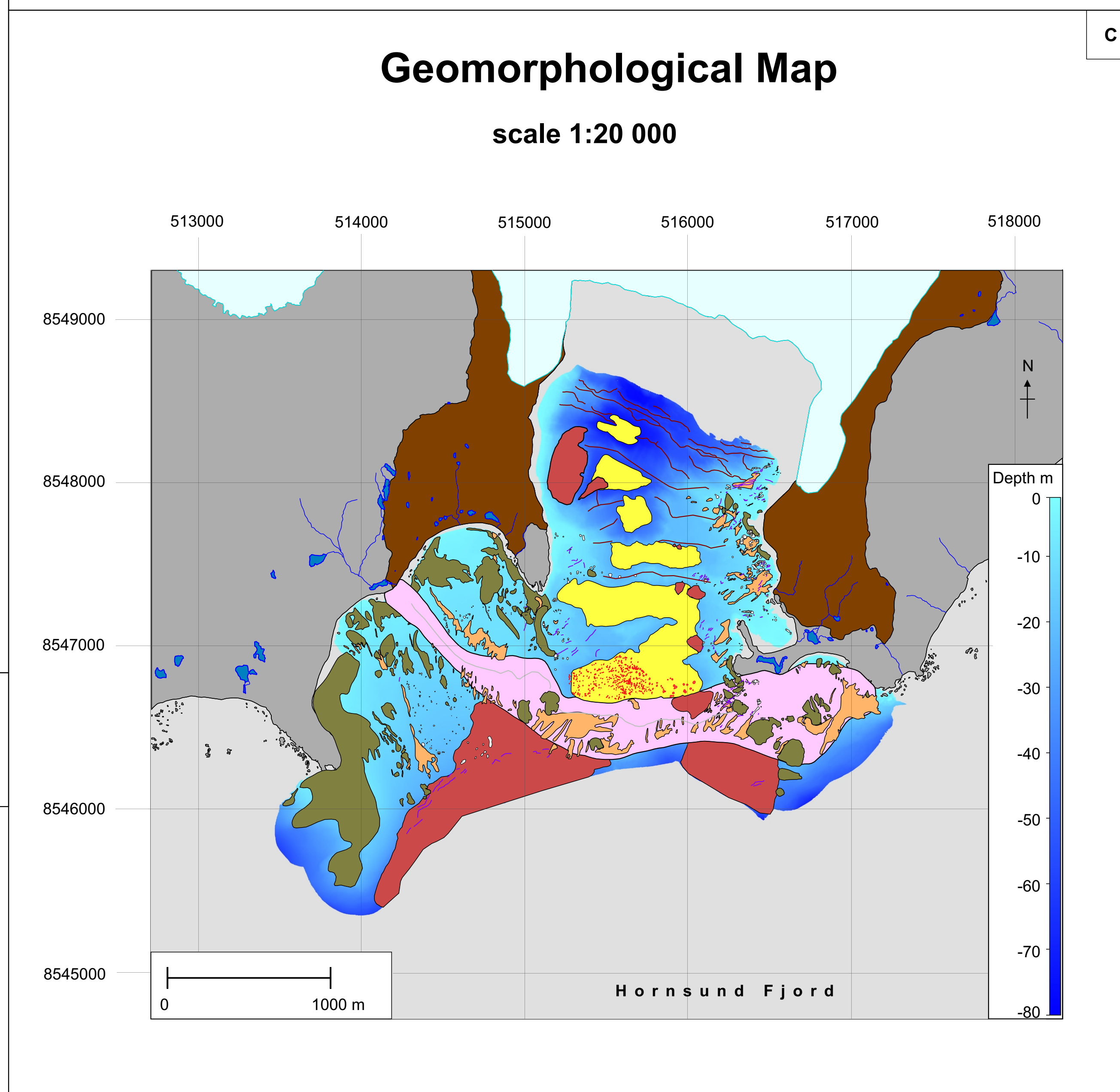
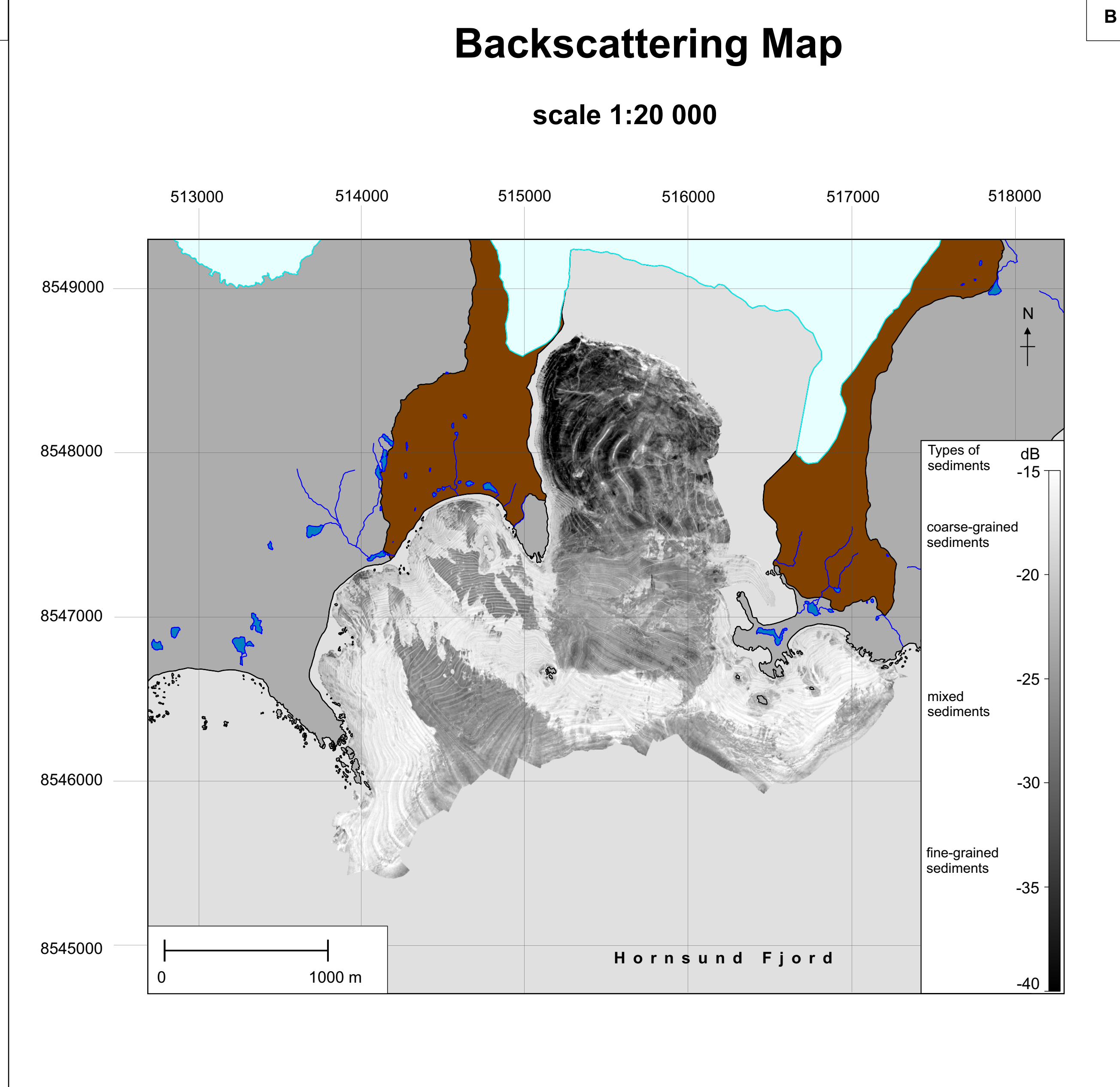
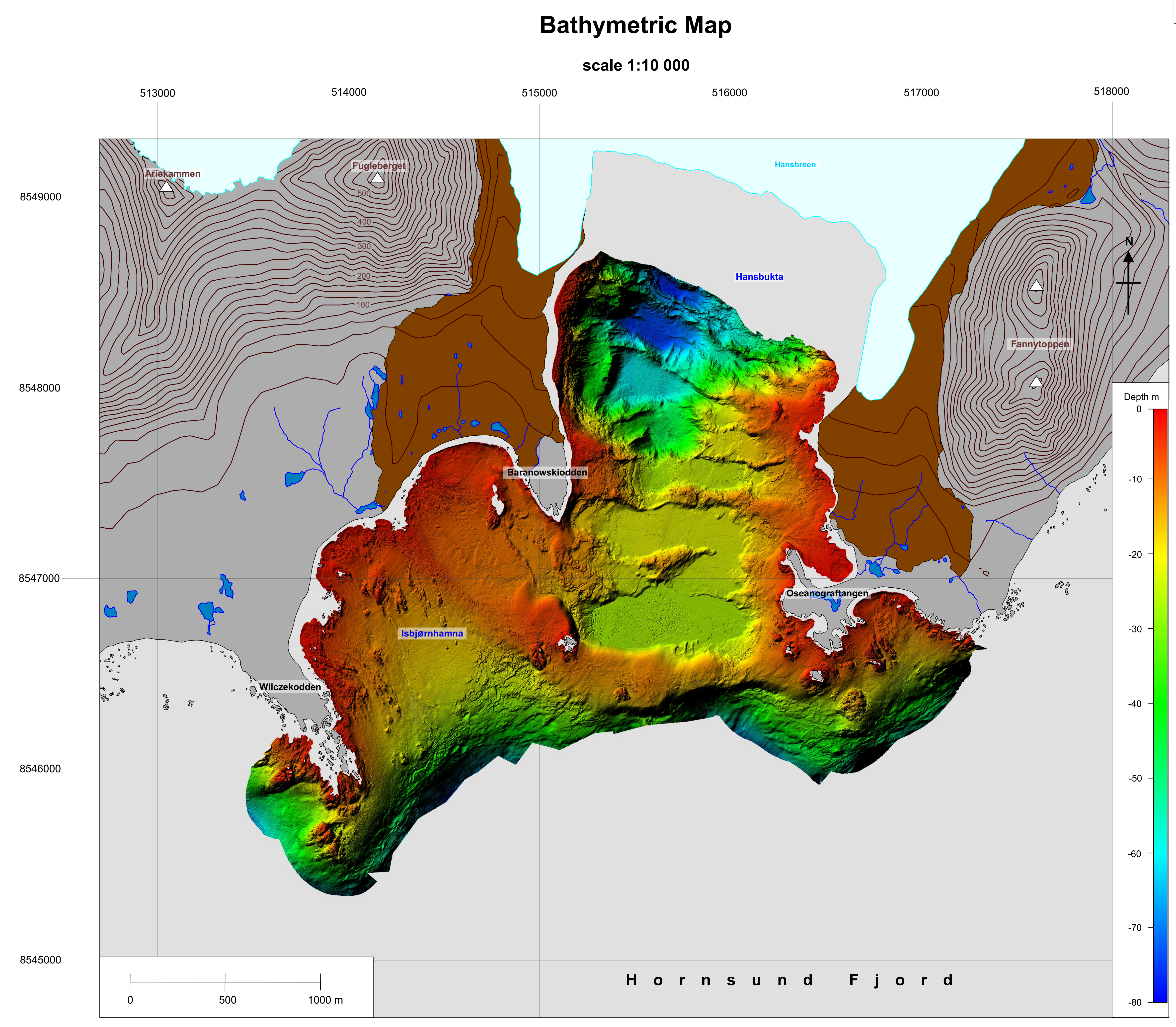
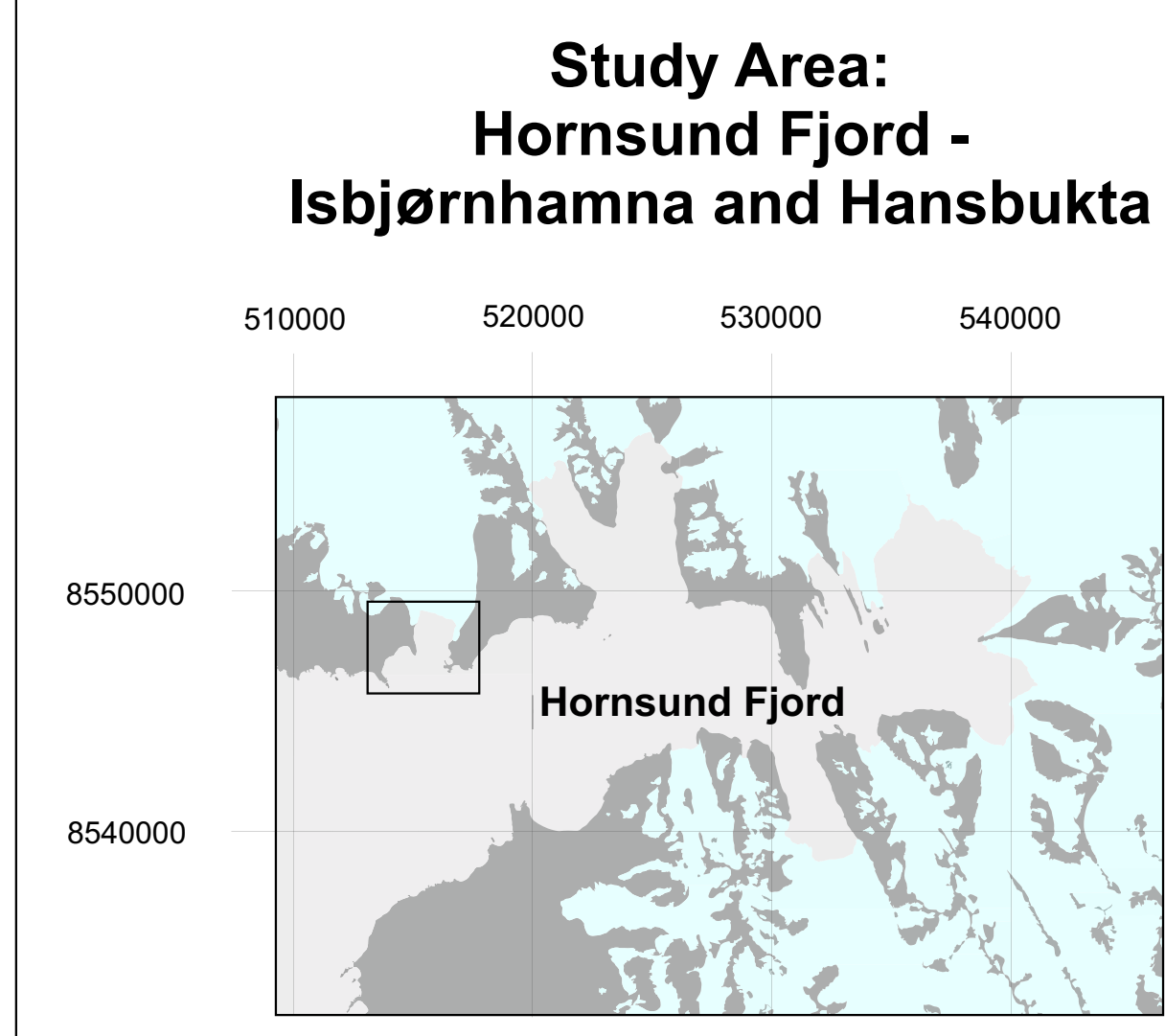
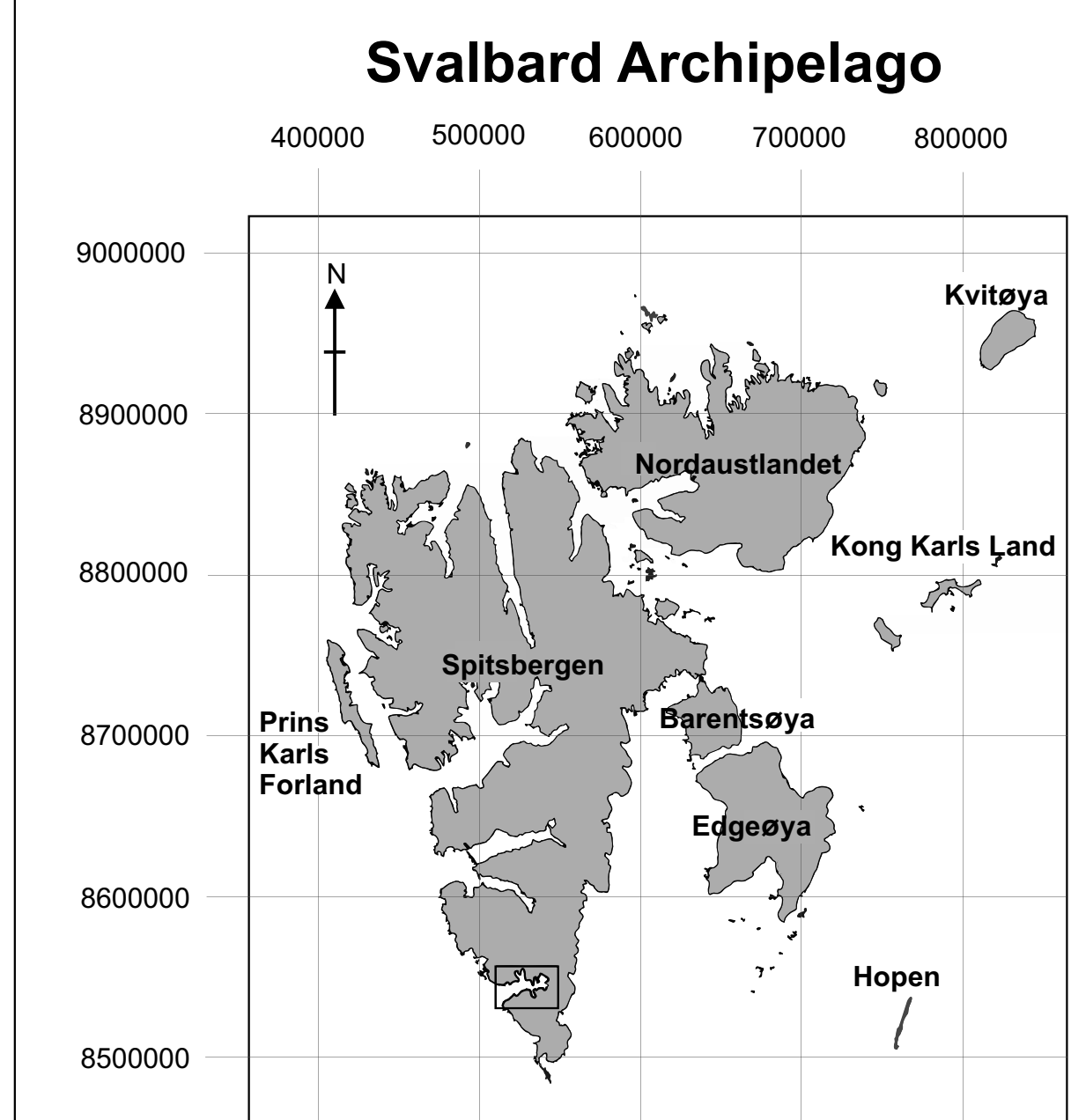
<sup>1</sup> Institute of Geophysics Polish Academy of Sciences, Warsaw, Poland (<https://www.igf.edu.pl>)

<sup>2</sup> Department of Geosciences, UiT The Arctic University of Norway, Tromsø, Norway (<https://en.uit.no>)

<sup>3</sup> Institute of Geology, Adam Mickiewicz University in Poznań, Poznań, Poland (<http://ig.amu.edu.pl>)

**Cartographic parameters**  
Datum: World Geodetic System, 1984  
Projection: UTM, zone 33  
The map accuracy: 0.5 meter (Bathymetric Map), and 1 meter for (Backscattering and Geomorphological maps).

© Journal of Maps, 2018



**Legend to Bathymetric, Backscattering and Geomorphological Maps:**

Geographical names	General map signatures	Geomorphological map signatures
<b>Wilczekodden</b> peninsulas	contours (20 m intervals)	land
<b>Hansbukta</b> bays	rivers	glacier
<b>Hansbreen</b> tidewater glacier	lakes	no data
<b>Fugleberget</b> peaks	peaks	terminal moraine ridge
		recessional moraine ridges
		ploughmarks
		pits (single pit and chain pits)
		pockmarks
		terminal moraine
		till
		flat-floored depressions
		megaripples
		slopes affected by mass wasting
		rock outcrops

**Source of data:**  
Vector data: shoreline, moraines, land, rivers, lakes, Hansbreen are from Norwegian Polar Institute. Bathymetric data are from Norwegian Hydrographic Service (permit for IG PAS number: 13/G722). The bathymetric measurements were performed in 2007. Hansbreen position and present vector data positions were updated according to the satellite image from Landsat 8 from 1st October 2015 (USGS).

**Acknowledgement:**  
The work has been partially supported by the Leading National Research Centre (KNOW) received by the Centre for Polar Studies for the period 2014-2018, Arctic Field Grant no. 256879/E10 funded by the Research Council of Norway (Svalbard Science Forum), National Science Centre (Poland) grants no. 2013/09/B/ST10/04141, 2013/10/E/ST10/00166 and statutory activities no. 3841/E-41/S/2017 of the Ministry of Sciences and Higher Education of Poland.