

Natural infections of small mammals with blood parasites on the borderland of boreal and temperate forest zones

Grzegorz KARBOWIAK, Leszek RYCHLIK, Wojciech NOWAKOWSKI and Irena WITA

Karbowiak G., Rychlik L., Nowakowski W. and Wita I. 2005. Natural infections of small mammals with blood parasites on the borderland of boreal and temperate forest zones. *Acta Theriologica* 50: 00-00.

Blood parasites of small mammals living in Białowieża Forest (eastern Poland) were investigated between 1996 and 2002. The following haemoparasite species were found: *Trypanosoma (Herpetosoma) evotomys* in bank vole *Clethrionomys glareolus* and root vole *Microtus oeconomus*; *Babesia microti* in root vole; *Hepatozoon erhardovae* in bank vole and *Hepatozoon* sp. in root vole. Some non-identified *Bartonella* species were found in bank vole, root vole, field vole *Microtus agrestis*, yellow-necked mouse *Apodemus flavicollis*, common shrew *Sorex araneus*, Eurasian water shrew *Neomys fodiens*, and Mediterranean water shrew *N. anomalus*. The prevalence and diversity of blood parasites were lower in shrews than small rodents. Totally, 52.0% of bank voles, 50.0% of root voles, 32.5% of common shrews, and 41.2% of Eurasian water shrews were infected with any of the blood parasites. Mixed infections were seldom observed in bank vole (17.3% of investigated individuals) and root vole (14.7%). No animals were infected with three or four parasites simultaneously. Infection of Białowieża small mammals with haemoparasites seemed to be similar to those described in other temperate forest regions rather than boreal ones. Infection rates of rodent species seem to be higher in their typical habitats: for bank vole it was the highest in mixed forest, whereas for root vole in sedge swamp. The results suggest that Microtidae play a greater role than Muridae or Soricidae in maintenance of *Babesia* and *Hepatozoon* foci in natural environments of central Europe.

W. Stefański Institute of Parasitology, Polish Academy of Sciences, Twarda 51/55, 00-818 Warsaw, Poland, e-mail: grzgrz@twarda.pan.pl (GK, IW); Mammal Research Institute, Polish Academy of Sciences, 17-230 Białowieża, Poland, e-mail: lrychlik@bison.zbs.bialowieza.pl (LR); Department of Biology, University of Podlasie, Prusa 12, 08-110 Siedlce, e-mail: koszatek@poczta.onet.pl (WN)

Key words: rodents, shrews, haematozoa, blood parasites, primeval forest

Introduction

Wild rodents are known to carry various pathogens which can be transmitted to man. However, little data exists about the role of small mammals in disseminating vector-transmitted blood parasites. In Poland, the occurrence of many parasites in rodents and shrews has been studied as part of ecological surveys on small mammals. Parasitological investigations of small mammals living in Białowieża Forest have been conducted since the second part of 20th century. They covered mainly the ectoparasites (Lachmajer and Wegner 1956, Lachmajer 1959, Wegner 1959) and helminths (Kisielewska 1963, 1964, 1970). The first study of blood parasites were made in mid-1990s only (Karbowski *et al.* 2002). Blood parasites of shrews have not been reported from Poland before; however, there are reports from elsewhere (eg Laakkonen 2000).

Białowieża Forest is one of the last primeval forest complexes in western and middle Europe. Moreover, it is an especially interesting place for biological investigations due to the geographical location on the borderland of the boreal and temperate forest zones. This fact results in the mix of fauna and flora from both zones (Faliński 1968, 1986, Gutowski and Jaroszewicz 2001, 2004). For example, among small mammals, masked shrew *Sorex caecutiens* – a boreal species – reaches its south-western limit in this area, whereas for Mediterranean water shrew *Neomys anomalus* and bi-coloured white-toothed shrew *Crocidura leucodon*, Białowieża Forest is the north-eastern boundary (Pucek 1981, Mitchell-Jones *et al.* 1999). The same can be expected for ecto- and endoparasites of small mammals. A typical taiga tick, *Ixodes persulcatus*, has its western limit in Belarussia and Lithuania, however single findings were noted in Białowieża (Siuda 1993). Therefore, we expected the differences in the structure or biological features of blood parasite fauna in comparison with other parts of Europe.

The aims of this study were: (1) To describe the protozoan parasites living in the blood of small rodents and shrews. A mixture of parasitological faunas typical for boreal and temperate forest zones was expected. (2) To compare prevalence and diversity of blood parasites in shrews and rodents. Higher prevalence and diversity were predicted in rodents because they are more social than shrews (Eisenberg 1966, Crook *et al.* 1976, Rychlik 1998), so more frequent parasite exchange should occur in rodents. (3) To investigate parasite

infection levels in different habitats. A higher prevalence was expected in habitats optimal for given species, due to higher densities of conspecifics and thus a higher risk of parasite transmission.

Material and methods

One-week trapping sessions of small rodents and shrews were conducted in four areas: area 1 – Czerlonka (mixed forest, compartment 491 of the Białowieża Forest; in June 1996 and June 1997), area 2 – Knihiniówka (ash-alder forest and sedge swamp, compartment 426; June, July and August 1996), area 3 – Podolany (bank of old river arm, between Białowieża and Podolany villages; August 2002), and area 4 – Reski (sedge swamp, compartment 398; August 2002). The mammals were caught in live-traps placed at permanent trap stations arranged in a rectangular grid or line. Traps were placed and set (without pre-baiting) in the afternoon, checked four times per day, and blocked after a final check around midnight.

Captured mammals were individually identified and released after collection of blood samples. Animals previously caught in the same session were immediately released. Blood samples were taken from the tip of tail and thin smears prepared. Smears were air-dried, fixed in methyl alcohol and stained for 1 hour with Giemsa, diluted (1:5) in phosphate buffer, pH 7.2. Slides were rinsed in buffer, dried and examined under a light microscope.

For measurements of parasites, “Analysis” software, in combination with a video camera and Olympus BX50F4 microscope, was used. This method affords possibilities for obtaining the measurements with accuracy to 0.01 μm . Stained blood smears were analysed at a magnification of 800 \times and 1500 \times . For each slide, about 50 fields were examined. Measurements were done on 100 parasite specimens. Terminology adapted by other researchers (Hoare 1972, Matthews *et al.* 1977, Kingston *et al.* 1992) was employed to characterise morphological features of protozoa found in the present study.

Results

A total of 158 small mammals (including 52 individuals of bank vole *Clethrionomys glareolus*, 34 root voles *Microtus oeconomus*, 2 field voles *Microtus agrestis*, 6 yellow-necked mice *Apodemus flavicollis*, 2 northern birch mice *Sicista betulina*, 40 common shrews *Sorex araneus*, 4 pygmy shrews *Sorex minutus*, 17 Eurasian water shrews *Neomys fodiens*, and 1 Mediterranean water shrew *Neomys anomalus*) were examined (Table 1). The following haemoparasite species were found: *Trypanosoma (Herpetosoma) evotomys* Hadwen, 1912 in

bank vole; *Trypanosoma (Herpetosoma) microti* Laveran and Pettit, 1909 in root vole; piroplasma *Babesia microti* in root vole; *Hepatozoon erhardovae* in bank vole, *Hepatozoon* sp. in root vole (Fig. 1). A number of non-identified bacteria, belonging to *Bartonella* genus were found in bank, root and field voles, yellow-necked mouse, common shrew, Eurasian and Mediterranean water shrews (Fig. 2, Table 1). Totally, 52.0% of bank voles, 50.0% of root voles, 32.5% of common shrews, and 41.2% of Eurasian water shrews were infected with any of the blood parasites.

Trypanosomes were found in rodents only. The prevalence of infection of bank vole with *T. (H.) evotomys* ranged from 2.7% (area 2) to 25% (area 1). The prevalence of infection of root vole with *T. (H.) microti* ranged from 21.4% (area 2) to 50% (area 4). The trypanosomes appeared in peripheral blood streams in the trypomastigota form (Fig. 1a, b). The detailed measurement parameters of trypanosomes are showed in Table 2.

Infection with *Babesia microti* was detected only in root vole. The prevalence of infection varied from 7.1% (area 2) to 50% (area 4). The mean intensity of the erythrocyte infection was 2.5%. The parasites were mostly of the ring-like and pear-shaped form (the morphological terminology after Mehlhorn and Schein 1984) and were 1.5-3.0 μm in diameter (Fig. 1c, d). Dividing stages, which occurred rarely, were 2.5-3.5 μm in diameter. Usually one parasite was seen in infected erythrocyte. The regular form of four cells – “maltese cross”, characteristic for “small” *Babesia* species, was seldom noticed. The infected animals did not show any noticeable pathological symptoms. However, during *post mortem* examination of some voles, accidentally died in the traps, a high degree of splenomegaly was observed (the size of the spleen was 25×15 mm in infected and $14-16 \times 3-5$ mm in non-infected root voles).

The gametocytes of *Hepatozoon erhardovae* were found inside leucocytes of bank and root voles (Table 1). The prevalence was relatively high (up to 41.6% in area 1). Root voles were infected with *Hepatozoon* sp. only in area 2 with low prevalence (7.1%). Only single parasite was seen in infected lymphocytes (Fig. 1e, f). The measurements of *Hepatozoon* sp. are presented in Table 3.

The *Bartonella* bacterias were found in nearly all mammal species investigated (Table 1). The prevalence of infection in rodents was high, especially in their optimal habitats (66.6% in yellow-necked mouse and 41.7% in bank vole from area 1, 37.5% in root vole from area 4). In contrast, root voles from areas 1 and 3 were not infected. The infection with *Bartonella* seemed to be also high in common shrew and Eurasian water shrew. It was

detected in Mediterranean water shrew and field vole, whereas not in pygmy shrew and birch mouse, but these results are based on too small samples. The bacteria found in Eurasian water shrew (mean $1.5 \times 0.4 \mu\text{m}$, range $0.6\text{-}1.7 \times 0.2\text{-}0.7 \mu\text{m}$) were bigger than in bank vole, field vole, yellow-necked mouse, and common shrew ($0.9 \times 0.4 \mu\text{m}$, range $0.5\text{-}1.6 \times 0.1\text{-}0.8 \mu\text{m}$; Fig. 2). The mean number of bacteria per single infected erythrocyte was lower in bank vole, field vole and Eurasian water shrew (16-17) than in yellow-necked mouse and common shrew (19-20).

Mixed infections, with two parasite species, were observed in bank vole and root vole. There were the following combinations of parasitism: *Trypanosoma* sp. + *Bartonella* sp., *Trypanosoma* sp. + *Babesia* sp., *Babesia* sp. + *Bartonella* sp., *Hepatozoon* sp. + *Bartonella* sp. All combinations were found in 14.7% of investigated root voles, and *Trypanosoma* sp. + *Bartonella* sp. and *Hepatozoon* sp. + *Bartonella* sp. in 17.3% of investigated bank voles. There were 36.5% of bank voles and 35.3% of root voles infected with one parasite species, whereas 46.2% of bank voles and 50.0% of root voles were not infected. No animals were infected with three and four parasites simultaneously.

Discussion

The prevalence of bank vole infection with *Trypanosoma evotomys* (up to 25.0% on area 1) was relatively high in Białowieża Forest. Our results are in accordance to data from former Czechoslovakia, Austria and Great Britain (Šebek 1975, Šebek *et al.* 1980, Frank 1978, Healing 1981, Turner 1986), but higher than from Norway (0-16.7% in summer - Wiger 1979). However, the infection with *Herpetosoma* trypanosomes depends on season (Turner 1986, Karbowiak and Wita 2001). *T. evotomys* was relatively rare in bank vole in spring (0.9% - Šebek 1975, Šebek *et al.* 1980) and frequent in late summer (Baker *et al.* 1963, Karbowiak and Wita 2001). The prevalence of *T. microti* was higher in root vole from Białowieża Forest (21.4-50.0%) than those noted for field vole (0.9-12.8% - Baker *et al.* 1963, Šebek 1975, Healing 1981) and common vole *Microtus arvalis* (9.0% - Pawelczyk *et al.* 2004). However, some authors showed the between-year variability in prevalence of this parasite (Wiger 1979, Pawelczyk *et al.* 2004).

In Białowieża, the *Babesia microti* infection was found in root vole only, but with a high frequency (up to 50.0%). The prevalence of *B. microti* in field vole ranged from 13.5 to 30.5% in temperate forest zone (Baker *et al.* 1963, Cox 1970, Krampitz and Bäumler 1978, Šebek *et al.* 1980, Healing 1981), was 14.6% in boreal zone of Europe (Wiger 1979), and

amounted only 9.0% in common vole from Mazurian Lakeland, northern Poland (Pawelczyk *et al.* 2004). Simultaneously, these authors, as well as Bajer *et al.* (2001) noted the low prevalence or lack of *B. microti* infection in other co-existing small mammals. This supports the great role of *Microtus* voles in maintenance of zoonotic babesiosis foci in natural environments in central Europe (Karbowski *et al.* 1999, Pawelczyk *et al.* 2004).

A high degree of splenomegaly observed in root vole corresponds with the previous observations that splenomegaly is a characteristic symptom of mammals infected with *B. microti* (Fay and Rausch 1969, Krampitz and Bäumler 1978, Watkins *et al.* 1991). Some authors correlate splenomegaly to infections with all blood parasites (eg Wiger 1978); however, we have not observed this phenomenon in animals infected with *Trypanosoma* or *Hepatozoon*. Apart splenomegaly symptoms, voles infected with *Babesia* displayed no other visible signs, so it is evident that piroplasms cause chronic avirulent infections in its natural hosts (Fay and Rausch 1969, Krampitz and Bäumler 1978, Turner 1986).

Hepatozoon spp. were detected in bank vole and root vole but not in yellow-necked mouse and insectivores. The prevalence of infection of bank vole in Białowieża (18.9-41.6%) was similar or lower than described in other temperate regions (28.2-56.0%; Šebek 1975, Healing 1981, Turner and Cox 1985), and similar or higher than in boreal ones (2.5-36.6% - Wiger 1979, 18-55% - Laakkonen *et al.* 2001). Our measurements of *H. erhardovae* in bank vole are in accordance with description given by Krampitz (1964). The prevalence of *Hepatozoon* sp. in root vole tended to be higher in Białowieża (7.1%) than in root vole (2% - Laakkonen *et al.* 2002) and field vole (4.2% - Wiger 1979) from northern regions. Based on morphology (Table 3), it is impossible to include the *Hepatozoon* found in our root voles to *H. microti* Coles, 1914 or *H. lavieri* (Brumpt, 1946), two species described in field and common voles, respectively (Krampitz 1964). Similarly to our findings, in other studies *Hepatozoon* was not detected in wood mouse *Apodemus sylvaticus* (Wiger 1979) and insectivores (Laakkonen *et al.* 2002), thus it can be concluded that Microtidae play a greater role in maintenance of *Hepatozoon* than Muridae or Soricidae.

The prevalence of *Bartonella* infection in rodents can be as high as >60% (Breitschwerdt and Kordick 2000). In Białowieża, this infection seemed to be higher in yellow-necked mouse (66.6%) and field vole (50%) than in bank vole (27.7-41.7%) and root vole (7.1-37.5%). Similar results (above 25% in seasonal peak of infections) have been obtained in Great Britain (Baker 1974, Healing 1981), Austria (Šebek *et al.* 1980), and northern Poland (Bajer *et al.* 2001, Pawelczyk *et al.* 2004). In contrast, lower infection was

observed in summer months in Norway: ca 10% of wood mice, 32% of field voles and 24% of bank voles (Wiger 1979).

The high prevalence of *Bartonella* infection was also detected in insectivores from Białowieża: 32.4-50.0% of common shrews and 46.6% of Eurasian water shrews were infected. So far, the *Bartonella* infection of *Sorex* shrews has been found in central (Šebek *et al.* 1980) and northern Europe (Laakkonen 2000) as well as North America (Breitschwerdt and Kordick 2000, Laakkonen *et al.* 2002), but the values were lower (2-20%). There are few probable reasons of the differences among localisations and mammal taxa: (1) the different composition of ectoparasites (especially dominant species of mites or fleas) in particular regions and on rodents and insectivores (Haitlinger 1983, 1984); (2) specific local conditions influencing the host-parasite interactions; and (3) blood parasites sampled from live (this study) versus dead animals (most other studies). Thus, these issues requires further investigations.

Bartonella species are very similar morphologically (Breitschwerdt and Kordick 2000). Except for the bigger bacteria from Eurasian water shrew, the mean sizes of bartonellas from Białowieża Forest did not differ. Moreover, we observed a quite high variability in number of bacteria per infected cell. These facts suggest that our mammals were infected with different *Bartonella* species. However, we did not identify the bacteria found because these parasites are not host-specific and cases of co-infection of one host with some *Bartonella* species have been reported (Birtles *et al.* 1994, Breitschwerdt and Kordick 2000).

The above literature survey showed many similarities in haemoparasite infection of small mammals between Białowieża and other regions of temperate forests, as well as some differences in comparison to the boreal zone. Usually, the infection rates of both rodents and shrews with particular parasites were lower in boreal zone than in Białowieża. Also, the total infection of rodents with all types of the blood parasites seemed to be lower in northern regions (eg about 30% for bank vole - Wiger 1979) than in Białowieża (about 50%). Laakkonen *et al.* (2002) observed a similar phenomenon and suggested that it is caused by an absence of vectors in arctic areas. On the other hand, in Białowieża we have not found haemoparasites of typical boreal inhabitants, as for example *Trypanosoma lemni* living on lemmings (Wiger 1978). Thus, although data on blood parasites of small mammals from the boreal zone are scarce, we can conclude that the haemoparasitic infections in Białowieża were similar to those described in other regions of temperate forests rather than boreal ones.

Some small mammals investigated have been mix-infected with two parasite species. However, the number of mixed infections is relatively low in comparison to the whole

number of infected rodents. The most common co-infection was *Hepatozoon*+*Bartonella* in bank vole. Other combinations, as well as co-infections in other host species, were seldom. Consistently with our prediction, the prevalence and diversity of blood parasites were higher in rodents (social) than shrews (asocial). Similar results were found by other authors (Cox 1970, Baker 1974, Turner 1986). This corresponds to higher infection rates and diversities of ectoparasites in rodents than shrews (Haitlinger 1983, 1984, Stanko 1989, Stanko *et al.* 2002).

Deciduous and mixed forests are the optimal habitats for bank vole, whereas sedge swamps and wet meadows are optimal for root vole (Pucek 1981, Rychlik 2001). The densities of these species were the highest in the mentioned habitats, respectively (eg Aulak 1970). Consistently with our prediction, parasite infections found in the present study were also higher in optimal then sub-optimal habitats: for bank vole they were higher in mixed forest (area 1) than in the three wet habitats (areas 2-4), whereas for root vole an opposite situation was observed, with the highest infection rates in sedge swamp (area 4). The differences in infection rates observed between the three wet habitats could result, for example, from local environmental conditions that may influence the dominance structure, prevalence of infestation and seasonal dynamics of ectoparasites (Haitlinger 1981) and, in turn, the blood parasites.

We would like to point out that, considering the factors described above, it is very difficult to describe the full picture of blood parasite infection of small mammals under natural conditions. Unfortunately, there are only few data about ecological factors (flora components, humidity etc.) in parasitological studies (Bajer *et al.* 2001, Karbowski and Wita 2001, Pawelczyk *et al.* 2004). The infection with blood parasites depends also on the age of animals (Krampitz and Bäumler 1978, Healing 1981, Turner 1986, Bajer *et al.* 2001, Pawelczyk *et al.* 2004). By these reasons, single observations are often insufficient and can give false results. It is therefore necessary to conduct annual thorough investigations of selected mammal populations in order to obtain detailed data about infection with blood parasites, as well as their carriers.

Acknowledgements: We are very grateful to M. Hajdul, K. Ostrowska, I. Smerczyński, E. Sorato, and R. Zwolak for their field and technician assistance, S. Prior for language consultation. This study was supported by funds of the IP PAS, MRI PAS and by grant no. 6 P04F 036 21 from the Committee for Scientific Research.

References

- Aulak W. 1970. Small mammal communities of the Białowieża National Park. *Acta Theriologica* 15: 465-515.
- Bajer A., Pawelczyk A., Behnke J., Gilbert F. and Sinski E. 2001. Factors affecting the component community structure of haemoparasites in bank voles (*Clethrionomys glareolus*) from the Mazury Lake District region of Poland. *Parasitology* 122: 43-54.
- Baker J. R. 1974. Protozoan parasites of the blood of British wild birds and mammals. *Journal of Zoology, London* 172: 169-190.
- Baker J. R., Chitty D. and Phipps E. 1963. Blood parasites of wild voles, *Microtus agrestis*, in England. *Parasitology* 53: 297-301.
- Birtles R. J., Harrison T. G. and Molyneux D. H. 1994. *Grahamella* in small woodland mammals in the UK: isolation, prevalence and host specificity. *Annales of Tropical and Medical Parasitology* 88: 317-327.
- Breitschwerdt E. B. and Kordick D. L. 2000. *Bartonella* infection in animals: carriership, reservoir potential, pathogenicity, and zoonotic potential for human infection. *Clinical Microbiology Review* 13: 428-438.
- Cox F. E. G. 1970. Parasitic protozoa of British wild mammals. *Mammal Review* 1: 1-28.
- Crook J. H., Ellis J. E. and Goss-Custard J. D. 1976. Mammalian social systems: structure and function. *Animal Behaviour* 24: 261-274.
- Eisenberg J. F. 1966. The social organizations of mammals. [In: *Handbuch der Zoologie. Eine Naturgeschichte der Stämme des Tierreiches*. Helmcke J.-G., Lengerken H., Starck D. and Wermuth H., eds]. Walter de Gruyter & Co., Berlin, Band 8, Teil 10: 1-92.
- Faliński J. B. (ed) 1968. The National Park in Białowieża Primeval Forest. PWRiL, Warsaw: 1-504. [In Polish]
- Faliński J. B. (ed) 1986. Vegetation dynamics in temperate lowland primeval forests. *Ecological studies in Białowieża forest*. Dr W. Junk Publishers, Dordrecht: 1-537.
- Fay F. H. and Rausch R. L. 1969. Parasitic organisms in the blood of arvicoline rodents in Alaska. *Journal of Parasitology* 55: 1258-1265.
- Frank C. 1978. Kleinsäugerprotozoen im Neusiedlerseegebiet. *Angewandte Parasitologie* 19: 137-154.
- Gutowski J. M. and Jaroszewicz B. (eds) 2001. Catalogue of the fauna of Białowieża Primeval Forest. Forestry Research Institute, Warsaw: 1-403.

- Gutowski J. M. and Jaroszewicz B. 2004. [Białowieża Primeval Forest as a refugium of European insect fauna]. *Wiadomości Entomologiczne* 23, Suppl. 2: 67-87. [In Polish]
- Haitlinger R. 1981. Structure of arthropod community occurring on *Microtus arvalis* (Pall.) in various habitats. I. Faunistic differentiation, dominance structure, arthropod infestation intensiveness in relation to habitats and host population dynamics. *Polish Ecological Studies* 7: 271-292.
- Haitlinger R. 1983. Invertebrates associated with the bank vole. Arthropod communities. [In: Ecology of the bank vole. Petruszewicz K., ed]. *Acta Theriologica* 28, Suppl. 1: 55-68.
- Haitlinger R. 1984. [Parasitic arthropods of *Neomys fodiens* (Penn.) and *Neomys anomalus* Cabr. (Mammalia, Insectivora) in Poland]. *Wiadomości Parazytologiczne* 30: 603-616. [In Polish]
- Healing T. D. 1981. Infections with blood parasites in the small British rodents *Apodemus sylvaticus*, *Clethrionomys glareolus* and *Microtus agrestis*. *Parasitology* 83: 179-189.
- Hoare C. A. 1972. The trypanosomes of mammals. IX. The Stercoraria. Subgenus *Herpetosoma* Doflein, 1901. Blackwell Scientific Publications, Oxford, Edinburgh: 214-326.
- Karbowiak G., Rychlik L., Wita I. and Czaplińska U. 2002. The blood parasites and their vectors in rodents living in wet habitats in Białowieża Forest. [In: Materials of the 4th International Symposium "Parasitic, allergenic and venomous arthropods – their medical and sanitary significance", Kazimierz Dolny, 6-9.05.2002]. Medical Academy of Lublin, Lublin: 36-37.
- Karbowiak G., Stanko M., Rychlik L., Nowakowski W. and Siuda K. 1999. The new data about zoonotic reservoir of *Babesia microti* in small mammals in Poland. *Acta Parasitologica* 44: 142-144.
- Karbowiak G. and Wita I. 2001. [Ecological aspects of the infection of bank vole *Clethrionomys glareolus* (Schreber, 1780) with *Trypanosoma (Herpetosoma) evotomys* Hadwen, 1912]. *Wiadomości Parazytologiczne* 47: 789-795. [In Polish]
- Kingston N., Bobek B., Perzanowski K., Wita I. and Maki L. 1992. Description of *Trypanosoma (Megatrypanum) stefanskii* sp. n. from Roe Deer (*Capreolus capreolus*) in Poland. *Journal of the Helminthological Society of Washington* 59: 89-95.
- Kisielewska K. 1963. Food composition and reproduction of *Sorex araneus* Linnaeus, 1758 in the light of parasitological research. *Acta Theriologica* 7: 127-153.
- Kisielewska K. 1964. Changes in the structure of cestodofauna of *Sorex araneus araneus* L. from the Białowieża National Park due to climatic conditions in 1960. *Acta Parasitologica Polonica* 12: 33-46.

- Kisielewska K. 1970. Ecological organization of intestinal helminth groupings in *Clethrionomys glareolus* (Schreb.) (Rodentia). II. An attempt at an introduction of helminths of *C. glareolus* from the Białowieża National Park into an island of the Beldany Lake (Mazurian Lakeland). *Acta Parasitologica Polonica* 18: 149-162.
- Krampitz H. E. 1964. Über das Vorkommen und Verhalten von Haemococcidien der Gattung *Hepatozoon* Miller 1908 (Protozoa, Adeleidea) in mittel- und südeuropäischen Säugern. *Acta Tropica* 21: 114-154.
- Krampitz H. E. and Bäumler W. 1978. Vorkommen, Saisondynamik und Wirtskreis von *Babesia microti* (França, 1912) in einheimischen Nagetieren. *Zeitschrift für Parasitenkunde* 58: 15-33.
- Laakkonen J. 2000. Microparasites of three species of shrews from Finnish Lapland. *Annales Zoolologici Fennici* 37: 37-41.
- Laakkonen J., Henttonen H., Hastriter M. W., Niemimaa J. and Jarrel G. H. 2002. Hemoparasites and fleas of shrews and rodents from Alaska. *Acta Parasitologica* 47: 255-257.
- Laakkonen J., Sukura A., Oksanen A., Henttonen H. and Soveri T. 2001. Haemogregarines of the genus *Hepatozoon* (Apicomplexa: Adeleina) in rodents from northern Europe. *Folia Parasitologica* 48: 263-267.
- Lachmajer J. 1959. Fleas of small mammals in natural focus of tick-born encephalitis in the Puszcza Białowieska (National Park). *Biuletyn Instytutu Medycyny Morskiej w Gdańsku* 10: 5-14.
- Lachmajer J. and Wegner Z. 1956. [Fauna of fleas and louses parasitizing small mammals of Białowieża National Park]. *Wiadomości Parazytologiczne* 5 (suppl): 103-104. [In Polish]
- Matthews M. J., Kingston N. and Morton J. K. 1977. *Trypanosoma cervi* Kingston and Morton, 1975 from mule deer, *Odocoileus hemionus*, in Wyoming. *Journal of Wildlife Diseases* 13: 33-39.
- Mehlhorn H. and Schein E. 1984. The piroplasms: life cycle and sexual stages. *Advances in Parasitology* 74: 151-158.
- Mitchell-Jones A. J., Amori G., Bogdanowicz W., Kryštufek B., Reijnders P. J. H., Spitzenberger F., Stubbe M., Thissen J. B. M., Vohralík V. and Zima J. (eds) 1999. The atlas of European mammals. T and AD Poyser Ltd, London: 1-484.
- Pawelczyk A., Bajer A., Behnke J. M., Gilbert F. S. and Sinski E. 2004. Factors affecting the component community structure of haemoparasites in common voles (*Microtus arvalis*) from the Mazury Lake District region of Poland. *Parasitology Research* 92: 270-284.
- Pucek Z. (ed.) 1981. Keys to vertebrates of Poland. Mammals. PWN - Polish Scientific

Publishers, Warszawa: 1-367.

Rychlik L. 1998. Evolution of social systems in shrews. [In: Evolution of shrews. Wójcik J. M. and Wolsan M., eds]. Mammal Research Institute, Polish Academy of Sciences, Białowieża: 347-406.

Rychlik L. 2001. Habitat preferences of water shrews and root vole coexisting along a stream in Białowieża Forest. *Säugetierkundliche Informationen*, Jena 5: 99-112.

Šebek Z. 1975. Blutparasiten der wildlebenden Kleinsäuger in der Tschechoslowakei. *Folia Parasitologica* 22: 11-20.

Šebek Z., Sixl W., Stünzner D., Valová M., Hubálek Z. and Troger H. 1980. Zur Kenntnis der Blutparasiten wildlebender Kleinsäuger in der Steiermark und im Burgenland. *Folia Parasitologica* 27: 295-301.

Siuda K. 1993. [Ticks of Poland (Acari: Ixodida). II. Systematics and distribution]. Polish Parasitological Society, Warszawa: 1-381. [In Polish]

Stanko M. 1989. [Mites (Acarina, Mesostigmata) of small mammals in two West Carpathian regions]. *Biologia*, Bratislava 44: 499-512. [In Slovak]

Stanko M., Miklisová D., Bellocq J. G. and Morand S. 2002. Mammal density and patterns of ectoparasite species richness and abundance. *Oecologia*, Berlin 131: 289-295.

Turner C. M. R. 1986. Seasonal and age distributions of *Babesia*, *Hepatozoon*, *Trypanosoma* and *Grahamella* species in *Clethrionomys glareolus* and *Apodemus sylvaticus* populations. *Parasitology* 93: 279-280.

Turner C. M. R. and Cox F. E. G. 1985. Interspecific interactions between blood parasites in a wild rodent community. *Annales of Tropical Medicine and Parasitology* 79: 463-465.

Watkins R. A., Moshier S. E., O'dell W. D. and Pinter A. J. 1991. Splenomegaly and reticulocytosis caused by *Babesia microti* infections in natural populations of the Montane vole, *Microtus montanus*. *Journal of Protozoology* 38: 573-576.

Wegner Z. 1959. Lice on small mammals in natural focus of tick-born encephalitis in the Puszcza Białowieska (National Park). *Biuletyn Instytutu Medycyny Morskiej w Gdańsku* 10: 31-38.

Wiger R. 1978. Hematological, splenic and adrenal changes associated with natural and experimental infections of *Trypanosoma lemmi* in the Norwegian lemming, *Lemmus lemmus* (L.). *Folia Parasitologica (Praha)* 25: 295-230.

Wiger R. 1979. Seasonal and annual variations in the prevalence of blood parasites in cyclic species of small rodents in Norway with special reference to *Clethrionomys glareolus*. *Holarctic Ecology* 2: 169-175.

Table 1. Infection rates with blood parasites of small mammals captured between June 1996 and August 2002 at four study areas within Białowieża Forest (E Poland). The number of animals infected/examined, as well as percent infected are shown. *n* – number of individuals examined, ¹⁾ the species names of the genera *Trypanosoma* and *Hepatozoon*, found in particular species of small mammals, are detailed in the text, ²⁾ sample size statistically insignificant.

Mammal species	<i>n</i>	<i>Trypanosoma</i> spp. ¹⁾		<i>Babesia</i> <i>microti</i>		<i>Hepatozoon</i> spp. ¹⁾		<i>Bartonella</i> spp.	
Area 1 (mixed forest)									
<i>C. glareolus</i>	12	3/12	(25.0%)	-	-	5/12	(41.6%)	5/12	(41.7%)
<i>M. oeconomus</i>	6	2/6	(33.3%)	2/6	(33.3%)	-	-	-	-
<i>A. flavicollis</i>	6	-	-	-	-	-	-	4/6	(66.6%)
Area 2 (ash-alder forest and sedge swamp)									
<i>C. glareolus</i>	37	1/37	(2.7%)	-	-	7/37	(18.9%)	10/37	(27.7%)
<i>M. oeconomus</i>	14	3/14	(21.4%)	1/14	(7.1%)	1/14	(7.1%)	1/14	(7.1%)
<i>S. araneus</i>	37	-	-	-	-	-	-	12/37	(32.4%)
<i>S. minutus</i>	4	-	-	-	-	-	-	-	-
<i>N. fodiens</i>	17	-	-	-	-	-	-	7/15	(46.6%)
<i>N. anomalus</i>	1	-	-	-	-	-	-	1/1	(100%) ²⁾
Area 3 (old river arm)									
<i>C. glareolus</i>	3	-	-	-	-	1/3	(33.3%)	1/3	(33.3%)
<i>M. oeconomus</i>	6	2/6	(33.3%)	-	-	-	-	-	-
<i>M. agrestis</i>	2	-	-	-	-	-	-	1/2	(50%) ²⁾
<i>S. betulina</i>	2	-	-	-	-	-	-	-	-
<i>S. araneus</i>	2	-	-	-	-	-	-	1/2	(50%) ²⁾
Area 4 (sedge swamp)									
<i>M. oeconomus</i>	8	4/8	(50.0%)	4/8	(50%)	-	-	3/8	(37.5%)
<i>S. araneus</i>	1	-	-	-	-	-	-	-	-

Table 2. Measurements (in μm) and size indices of *Trypanosoma evotomys* from stained films of the blood of bank vole *Clethrionomys glareolus* and *T. microti* from blood of root vole *Microtus oeconomus* caught in Białowieża Forest (E Poland). Measurements: PK - posterior end to kinetoplast, KN - kinetoplast to nucleus centre, PN - posterior end to nucleus centre, NA - nucleus centre to anterior end, BL - body length, FF - free flagellum length, L - total length, N - nucleus length, W - width of body on the nucleus level excluding the undulating membrane. Indices: nuclear index $\text{NI} = \text{PN} / \text{NA}$, kinetoplastic index $\text{KI} = \text{PN} / \text{KN}$, flagellar index $\text{FF}:\text{BL}$.

<i>Trypanosoma</i> species		Parameter					
		PK	KN	PN	NA	BL	FF
<i>T. evotomys</i> <i>n</i> = 100	mean	3.26 ± 0.29	7.66 ± 0.51	10.92 ± 0.52	10.50 ± 1.46	21.43 ± 1.47	6.23 ± 1.42
	range	2.87-3.73	6.98-8.70	10.05-11.74	8.20-12.18	19.37-23.28	3.99-8.71
<i>T. microti</i> <i>n</i> = 100	mean	4.31 ± 0.53	6.44 ± 0.71	10.74 ± 0.79	10.92 ± 1.15	21.66 ± 1.48	8.50 ± 0.99
	range	2.68-6.06	3.58-8.14	7.93-12.65	8.03-14.07	17.36-25.76	6.14-11.31

<i>Trypanosoma</i> species		Parameter					
		L	N	W	NI	KI	FF:BL
<i>T. evotomys</i> <i>n</i> = 100	mean	27.56 ± 1.47	3.03 ± 0.26	1.12 ± 0.18	1.06 ± 0.17	1.43 ± 0.05	3.63 ± 0.92
	range	24.15-29.10	2.65-3.61	0.83-1.53	0.88-1.36	1.35-1.51	2.22-5.05
<i>T. microti</i> <i>n</i> = 100	mean	30.16 ± 1.36	2.77 ± 0.44	1.57 ± 0.48	0.99 ± 0.12	1.67 ± 0.15	2.59 ± 0.41
	range	25.09-33.00	1.09-3.94	0.87-3.38	0.75-1.40	1.26-2.22	1.76-3.79

Table 3. Measurements (in μm) of *Hepatozoon erhardovae* and *Hepatozoon* sp. from stained films of the blood of bank vole *Clethrionomys glareolus* and root vole *Microtus oeconomus* caught in Białowieża Forest (E Poland).

Parasite		Length	Width	Nucleus length \times width
<i>H. erhardovae</i> from	mean	9.4 ± 0.8	3.4 ± 0.4	$4.8 \pm 0.7 \times 2.5 \pm 0.4$
<i>C. glareolus</i>	range	8.4–11.0	2.8–4.3	$2.4\text{--}6.0 \times 1.8\text{--}3.8$
<i>H. sp.</i> from	mean	9.4 ± 0.5	3.3 ± 0.4	$4.8 \pm 0.4 \times 2.4 \pm 0.3$
<i>M. oeconomus</i>	range	8.0–10.4	2.4–3.9	$4.0\text{--}5.7 \times 1.7\text{--}2.9$

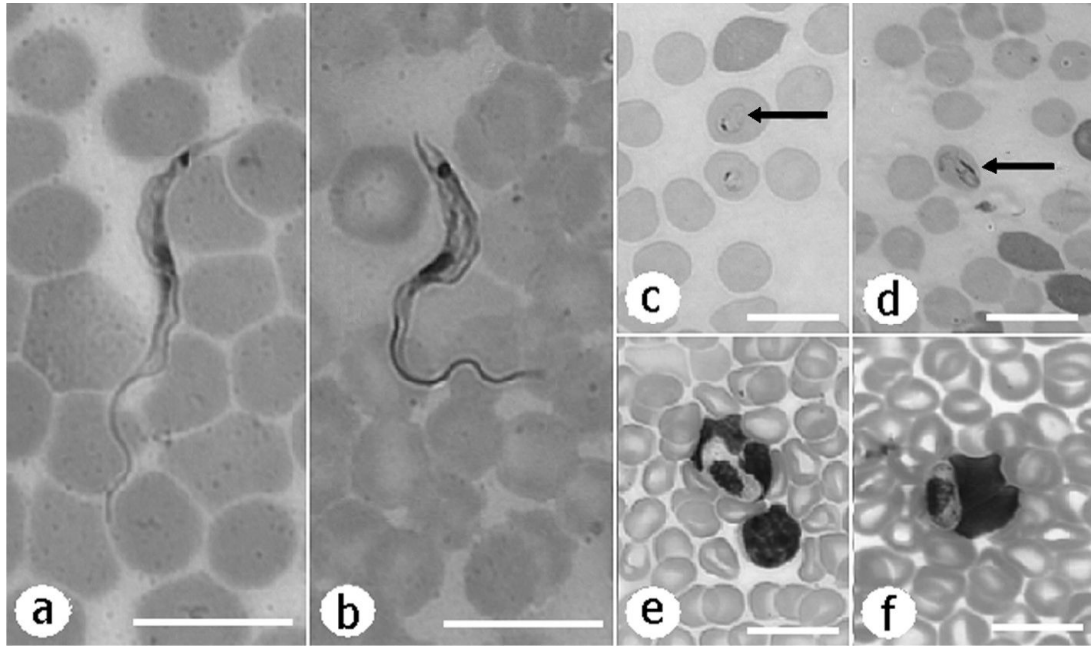


Fig. 1. Blood parasites of small rodents from Białowieża Forest (E Poland): (a) *Trypanosoma evotomys* from bank vole, (b) *Trypanosoma microti* from root vole, (c) ring-like and (d) pear-shaped forms of *Babesia* piroplasms detected in root vole, (e) *Hepatozoon erhardovae* from bank vole, (f) *Hepatozoon* sp. from root vole. Scale bars = 10 μ m.

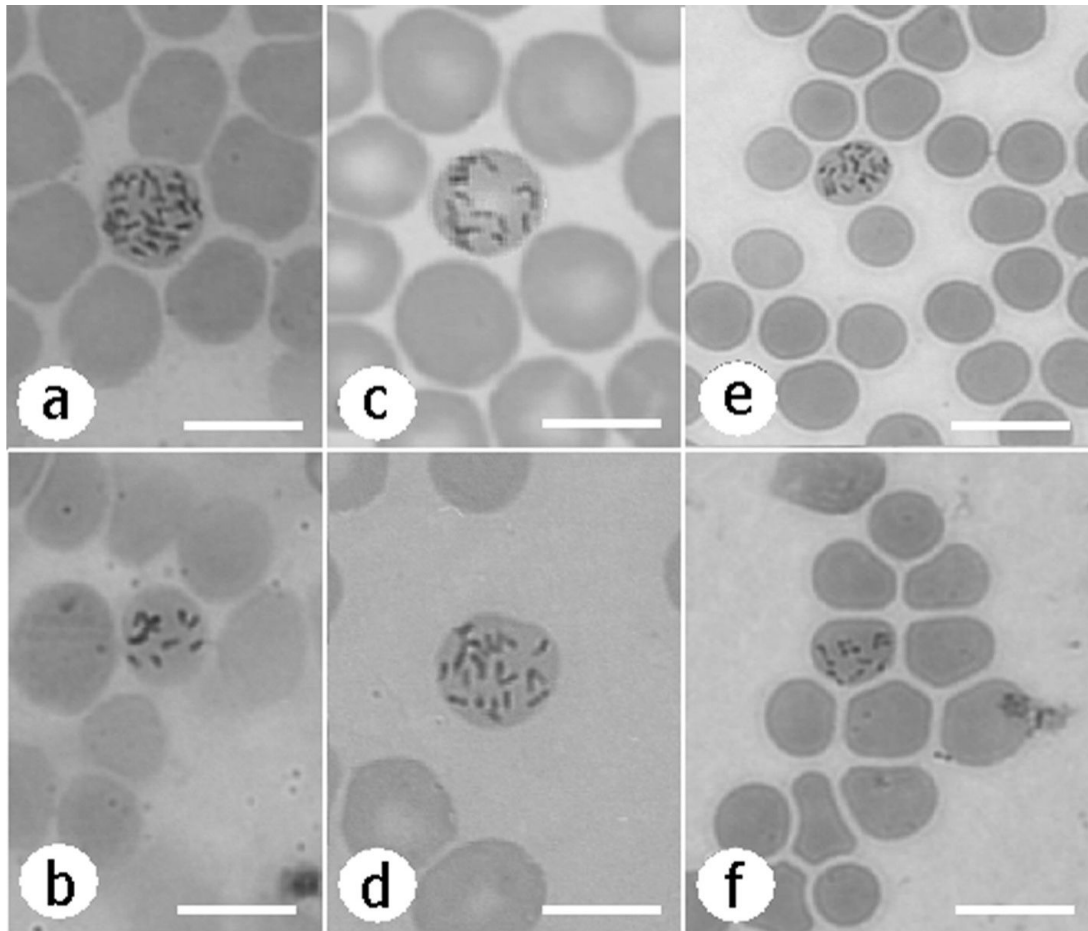


Fig. 2. *Bartonella* sp. detected in erythrocytes of small rodents and insectivores from Białowieża Forest (E Poland): (a, b) bank vole, (c) root vole, (d) yellow-necked mouse, (e) common shrew, (f) Eurasian water shrew. Scale bars = 5 μm.