

EASTERN EXODUS OF THE GLOBULAR AMPHORA CULTURE PEOPLE

Mikhail M. Charniauski

Stanisław Gołub

Sławomir Kadrow

Wiesław Koman

Wanda Kozak-Zychman

Mykola Kryvaltsevich

Yuriy Maleyev

Boris Pryshchepa

Yuriy Y. Rassamakin

Irina L. Serdyukova

Svyatoslav V. Shelomentsev-Terskiy

Evgeniy A. Shmidt

Marzena Szmyt

Józef Ścibor

BALTIC-PONTIC STUDIES

V O L U M E 4 • 1996

BALTIC-PONTIC STUDIES
61-809 Poznań (Poland)
Św. Marcin 78
Tel. (061) 536709 w. 147 Fax (061) 536-536

EDITOR
Aleksander Koško

EDITORIAL COMMITTEE
Sophia S. Berezanskaya (Kiev), Aleksandra Cofta-Broniewska
(Poznań), Mikhail Charniauski (Minsk), Lucyna Domańska
(Łódź), Viktor I. Klochko (Kiev), Petro Tolochko (Kiev)

SECRETARY
Marzena Szmyt

ADAM MICKIEWICZ UNIVERSITY
EASTERN INSTITUTE
INSTITUTE OF PREHISTORY
Poznań 1996
ISBN 83-86094-03-6
ISSN 1231-0344

EASTERN EXODUS OF THE GLOBULAR AMPHORA CULTURE PEOPLE

Mikhail M. Charniauski
Stanisław Gołub
Sławomir Kadrow
Wiesław Koman
Wanda Kozak-Zychman
Mykola Kryvaltsevich
Yuriy Maleyev
Boris Pryshchepa
Yuriy Y. Rassamakin
Irina L. Serdyukova
Svyatoslav V. Shelomentsev-Terskiy
Evgeniy A. Shmidt
Marzena Szmyt
Józef Ścibor

BALTIC-PONTIC STUDIES

V O L U M E 4 • 1996

© Copyright by BPS and Authors
All rights reserved

Cover Design: Eugeniusz Skorwider

Linguistic consultation: James Grossklag

Printed in Poland

Computer typeset by PSO Sp. z o.o. w Poznaniu

CONTENTS

INTRODUCTION	3
Marzena Szmyt, GLOBULAR AMPHORA CULTURE IN EASTERN EUROPE. PRESENT STATE OF RESEARCH AND POSSIBILITIES FOR FUTURE STUDIES	3
SOURCES	28
Józef Ścibior, Wiesław Koman, GRAVE OF THE GLOBULAR AMPHORA CULTURE FROM SITE NO. 27 IN ŚWIERSZCZÓW (PROV. OF ZAMOŚĆ, POLAND)	28
Stanisław Gołub, GRAVE OF THE GLOBULAR AMPHORA CULTURE FROM SITE NO. 8 IN KRASNYSTAW (PROV. OF CHEŁM, POLAND)	35
Stanisław Gołub, GRAVE OF THE GLOBULAR AMPHORA CULTURE FROM SITE NO. 1 IN ŁOPIENNIK DOLNY KOLONIA (PROV. OF CHEŁM, POLAND)	44
Wanda Kozak-Zychman, ANTHROPOLOGICAL DESCRIPTION OF BONE REMAINS FROM A GRAVE OF GLOBULAR AMPHORA CULTURE IN ŁOPIENNIK DOLNY KOLONIA, SITE 1 (PROV. OF CHEŁM, POLAND)	51
Yuriy Maleyev, SELECTED GRAVES OF GLOBULAR AMPHORA CULTURE FROM VOLHYNIA AND PODOLIA (UKRAINE)	53
Yuriy Maleyev, Boris Pryshchepa GRAVE OF GLOBULAR AMPHORA CULTURE FROM TOVPYZHYN (DISTRICT OF RIVNE, UKRAINE)	62
Svyatoslav V. Shelomentsev-Terskiy, SETTLEMENT OF GLOBULAR AMPHORA CULTURE IN PERESOPNITSA, THE VOLHYNIA REGION (UKRAINE)	70

Evgeniy A. Shmidt, Marzena Szmyt RITUAL COMPLEX OF THE GLOBULAR AMPHORA CULTURE ON THE UPPER DNIEPER BASIN (RUSSIA)	79
Mikhail M. Charniauski, MATERIALS OF GLOBULAR AMPHORA CULTURE IN BELORUS	87
Mykola Kryvaltsevich, GRAVE OF THE MIDDLE DNIEPER CULTURE FROM PRORVA, SITE 1 (GOMEL REGION, BELORUS)	98
ANALYSIS	103
Sławomir Kadrow, Marzena Szmyt, ABSOLUTE CHRONOLOGY OF THE EASTERN GROUP OF GLOBULAR AMPHORA CULTURE	103
Yuriy Y. Rassamakin, ON EARLY ELEMENTS OF THE GLOBULAR AMPHORA CULTURE AND OTHER CENTRAL EUROPEAN CULTURES IN THE LATE ENEOLITHIC OF THE NORTHERN BLACK SEA REGION	112
Irina L. Serdyukowa, CONTRIBUTION TO THE ORIGIN OF THE BRONZE AGE IN THE MIDDLE DNIEPER REGION	133
References	156
List of Authors	170

Editor's Foreword

Globular Amphora culture settlements make one of the most important systems of circulation of cultural patterns in the border zone between the drainage areas of the Baltic and Black Seas. One aspect of this problem, namely the „eastern exodus” mentioned in the title, has seemingly rich historiography. Under closer scrutiny, however, it reveals many intuitive opinions based on weak and insufficiently explored sources. This belief lay behind the present issue of the „Baltic-Pontic Studies”. The papers presented in this issue open new areas of discussion of the problems in question. For the first time, the discussion is set against an incontrovertible scale of absolute chronology. This issue anticipates a broader synthesising presentation to be published in the not too distant future.

Editorial comment

1. All dates in the *B-PS* are calibrated [see: *Radiocarbon* vol.28, 1986, and the next volumes]. Deviations from this rule will be point out in notes.

2. The names of the archaeological cultures (especially from the territory of the Ukraine) are standarized according to the English literature on the subject [e.g. Mallory 1989]. In the case of a new term, the author's original name has been retained.

3. The place names located in the Ukraine have been transliterat from the versions suggested by the author (i.e. from the Belorussian, Ukrainian, Polish or Russian originals).

Stanisław Gołub

**GRAVE OF THE GLOBULAR AMPHORA CULTURE
FROM SITE NO. 1 IN ŁOPIENNIK DOLNY KOLONIA (PROV.
OF CHEŁM, POLAND)**

On 7 February 1961, a farmer, F. Kosecki, excavating building stone or chalk rock with his brothers, discovered a stone grave about 55 cm below the ground. The discovery turned out to be a feature of the Globular Amphora culture (GAC) [Wieliczko 1961:232; Sztandar Ludu 1961]. The farmers removed the contents of the grave partially damaging some artefacts and their context.

A few days later J. Gruba arrived at the site and carried out emergency excavations [Nosek 1967:211-213]. The artefacts and stones were transferred to the Museum in Krasnystaw, where the grave was reconstructed under the direction of Z. Ślusarski [Opolowicz, Ślusarski 1962]. During verification, on 21 April 1988, a flint chip was found at the site (inventory no. 2902 in the Museum in Chełm). Previously found artefacts are permanently displayed in the Museum in Krasnystaw.

Physiographically, the area belongs to the Gieczew Plateau, the central part of the Lublin Plateau [Jahn 1956], and displays typical morphological features of this region. Among them are: elevated areas of a gently undulating plateau, steep and deep valleys, isolated hills and stretches of loess (Fig. 1).

1. GRAVE STRUCTURE

The feature was a cist grave covered, as it seems, with two stone slabs of which only one has survived (Fig. 2). The orientation of its longer axis was E-W. It was built of large slabs of Tertiary sandstone that does not occur in this area and that must have been imported. The E wall was made of one slab (Fig. 1 and 2), while the W wall was made of one slab according to J. Gurba [Nosek 1967:212] and of two following Z. Ślusarski's reconstruction. It is hard to say which version is true because the only existing photograph taken after the discovery of the grave is of poor quality. Still worse, it shows only one shorter wall, either E or W. There are

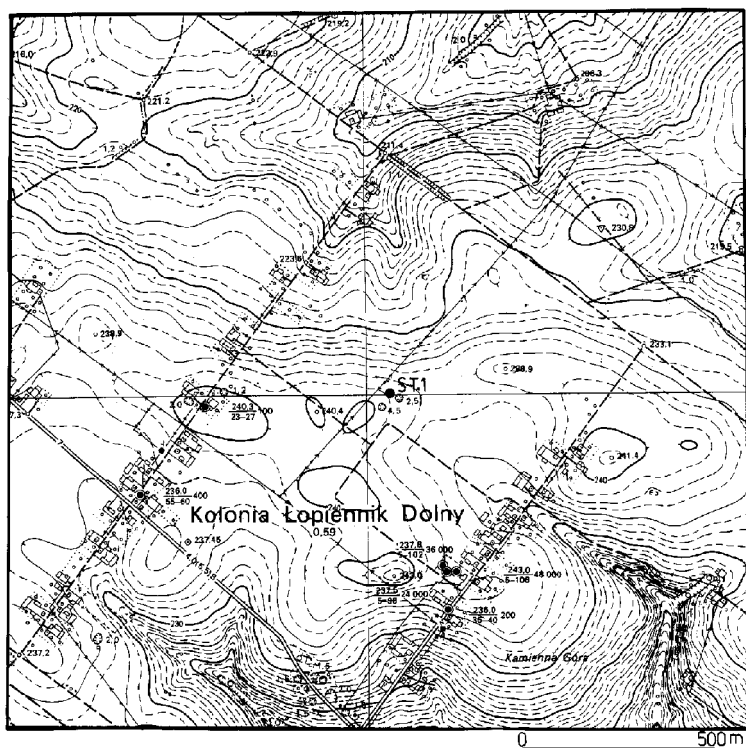


Fig. 1. Location map

more doubts concerning the dimensions and the number of slabs. Information of 1961 puts the number of slabs at 11 which rather agrees with the reconstruction (Fig. 1) and not with S. Nosek's account [1967:212]. The slabs were carefully fitted and fixed with wedges. Stone no. 8 is broken.

The walls were on the average 80-87 cm high (Fig. 3). The outer dimensions according to different sources were as follows: 2 x 1 m [Sztandar Ludu 1961], 2.35 x 1.20 m [Nosek 1967:212] and 2.05 x 1.16 m (reconstruction). At the bottom were hard clay with loess and scattered stones. In the E part was a large rectangular stone slab (no. 12) on which the deceased's head rested. There was also another small triangular slab (no. 13). In the SW corner there was one more stone. Bone remains belonged to a man who died at the age of 25-30 years [see Kozak-Zychman, *Anthropological...*, in this volume].

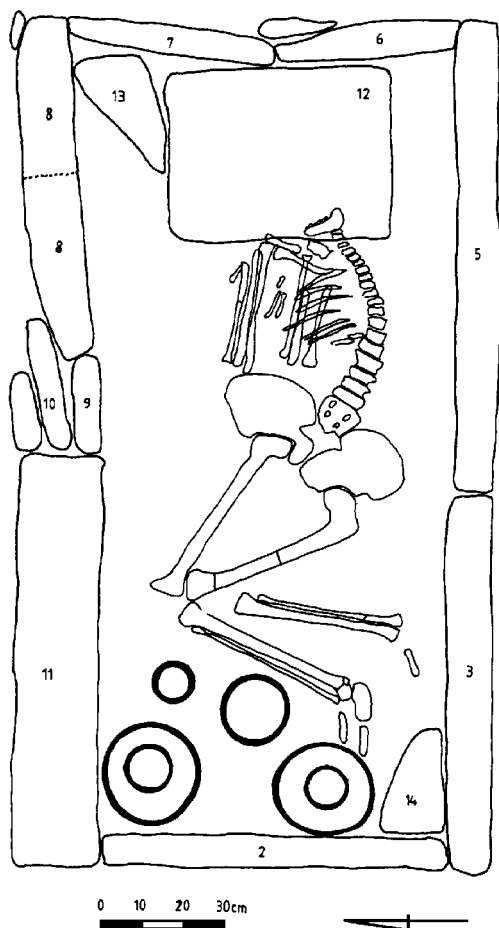


Fig. 2. Łopiennik Dolny Kolonia site 1. Plan of grave showing location of grave-goods

2. DESCRIPTION OF MATERIALS

Next to the head were found an axe and a chisel made of banded flint (Fig. 4:1,2).

The axe (Fig. 4:1) is large, tetrahedral and has a trapezoidal shape. Its cross-section is rectangular. The edge is curved while the butt is flat and rectangular. The surface is carefully smoothed. Dimensions: length (L): ca 147 mm, edge width (W e): ca 61 mm, butt width (W b): ca 24 mm, maximum thickness (T): ca 20 mm.

The chisel's edge is curved, while its cross-section is rectangular and the heel

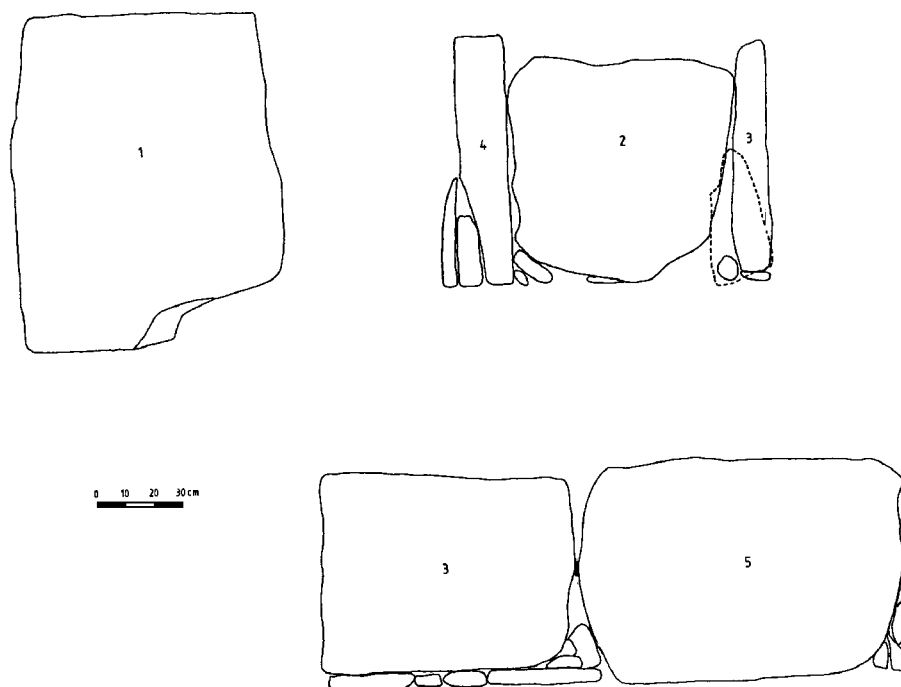


Fig. 3. Łopiennik Dolny Kolonia site 1. Wall cross-sections: a) southern b) western from the outside and plan of stone slab from grave cover. Hatching marks the stone slab that was added. Individual stones are 1 - 5 as in Fig. 2

is bevelled (Fig. 4:2). As the axe, it is also carefully smoothed. Dimensions: L: ca 108 mm, W e: ca 18 mm, heel width: ca 14 mm, T: ca 15 mm.

In one of the amphorae, a pig fang was found. „Sztandar Ludu” and M. Wieliczko mention an ornament made of a wild boar fang. At present, however, the museum’s inventory contains two fragments of pig fangs (Fig. 4:3,4). Although they show signs of cutting, it is difficult to determine what their function was, whether they were tools or ornaments. Dimensions of the larger one: L: 63 mm, W: 11-12 mm, T : 6 mm. Dimensions of the smaller one: L: 49 mm, W: 15 mm, T: 7-8 mm. Both are badly damaged and incomplete.

Next to the lower limbs four vessels were found (Fig. 5). Data concerning their mineral admixture, colour, baking and fracture are hardly obtainable because of the complete reconstruction and colouring carried out almost twenty years ago. Loose fragments of only two vessels were found making it possible to describe these vessels in greater detail.

1. A large, bulbous amphora with four handles and an ornament (Fig. 4:2). Fully preserved, the vessel resembles the forms of type IIA1 [Wiślański 1966:23,

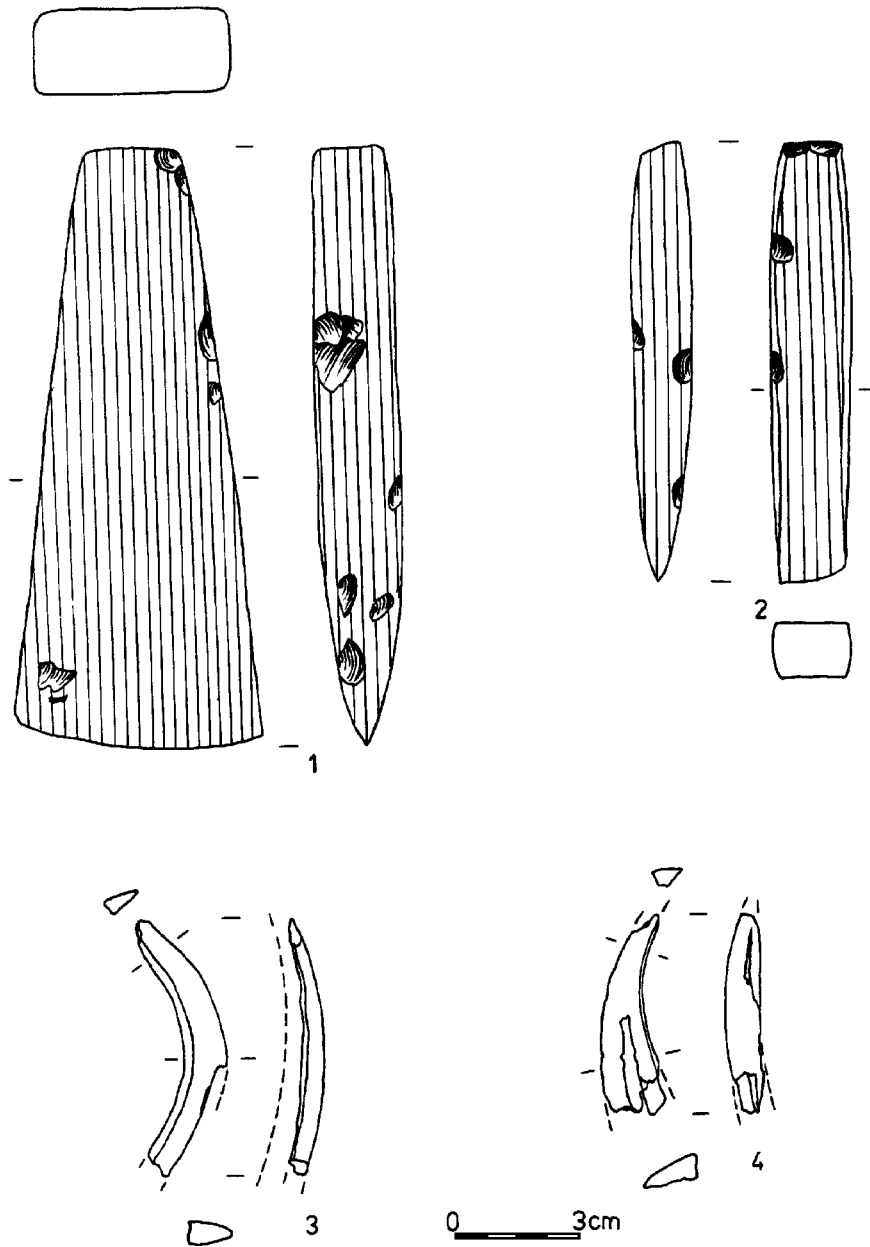


Fig. 4. Łopiennik Dolny Kolonia site 1. Grave-goods: 1 - flint axe, 2 - flint chisel, 3-4 - ornaments of pig fangs

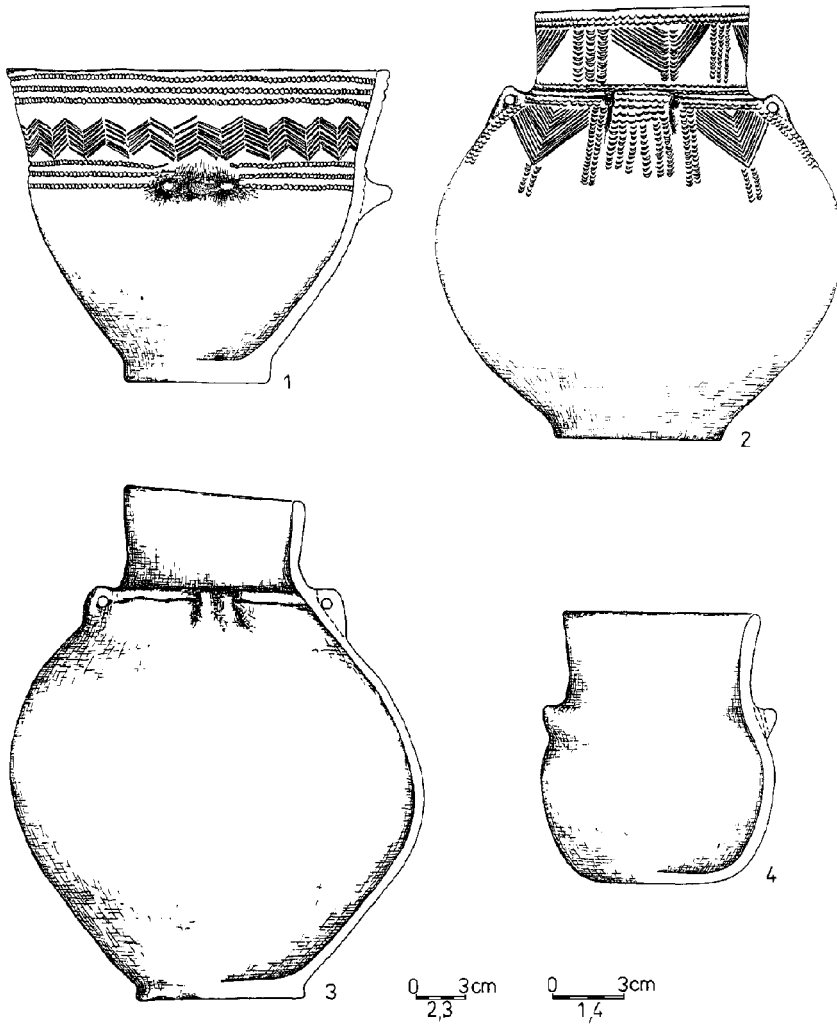


Fig. 5. Łopiennik Dolny Kolonia site 1. Pottery

28-29]. It has a high cylindrical neck and a clearly marked bottom. The lip is slightly rounded. It has a considerable admixture of fine and small-grained gravel of grey and white colours. Both inner and outer surfaces are uneven, smeared with slip and show signs of burnishing. The colour changes from light brown on the inside to dark brown and black. The fracture is stratified into three layers. The four, elbow-like handles are relatively wide and are symmetrically placed. They are horizontally perforated and joined by a relief moulding. The vessel is richly ornamented on the

neck and the upper portion of the belly. The ornaments are incised or impressed with a stamp and include a combination of overlapping triangles as well as vertical and horizontal rows of arches. Dimensions: height (H): 251-257 mm, lip diameter (R1): 128-129 mm, maximum belly diameter (R2): 244 mm, bottom diameter (R3): 100 mm.

2. A large, bulbous amphora with four handles and no ornament (Fig. 5:3). The vessel also resembles the forms of type IIA1 [Wiślański 1966:23, 28-29]. It has a high, slightly flared neck and a clearly marked bottom in the form of a small foot. The lip is cut almost flat. The vessel's upper portion is highly asymmetrical. It has an admixture of medium and coarse-grained gravel of white, pink and red colours. Both inner and outer surfaces are uneven and patchy light brown, grey and black. The fracture is clearly stratified into three layers. The four, elbow-like handles are symmetrically placed, horizontally perforated and joined by a relief moulding. Dimensions: H: 295-305 mm, R1: 104 mm, R2: 140 mm, R3: 102 mm.

3. A bowl or vase with a slightly flared lip (Fig. 5:1). It is ornamented and resembles the forms of types IVA1 or VB1 [Wiślański 1966:23, 30-32]. The bottom is clearly marked, whereas the lip is slightly bevelled. It has an admixture of fine and medium-grained sand and gravel of predominantly greyish-white colour. Both outer and inner surfaces are smoothed and of black and brown colours. A relief handle, in the form of a button with two dimples at the end, is present. The upper portion displays an incised and stamp ornament. Underneath the lip edge runs a triple row of impressions of an oval stamp forming continuous lines. Below them runs a multiplied pattern of incised zigzags (8-9 elements) followed below by a repeated pattern of stamp lines. S. Nosek mentions that the ornamentation patterns were inlaid with white paste [Nosek 1967:212]. Dimensions: H1: 130 mm, R1: 161 mm, R2: 142 mm, R3: 62 mm.

4. A small undecorated amphora with two handles (Fig. 5:4). It is related to the forms of type IB3 [Wiślański 1966:23, 27]. The neck is slightly flared, while the bottom is unmarked and rather flat. The lip is clearly rounded. It has an admixture of fine and medium-grained gravel (white, pink and black) and sand. The fracture is visibly divided into three layers with thin and dark outer layers separated by a greyish-pink inner layer. The colour of the vessel is dark brown to black. The two handles — relief buttons — are vertically perforated. Dimensions: H1: 113 mm, R1: 83 mm, R2: 100 mm, R3: about 60 mm.

Two human bones (the dextral femur and the sinistral tibia) were submitted to the ¹⁴C analysis [see Kadrow, Szmyt, Absolute. . . , in this volume].

Translated by Piotr T. Żebrowski

ABBREVIATIONS

AAC	– Acta Archaeologica Carpathica, Kraków.
AO	– Arkheologicheskiye otkrytiya, Moskva.
BPS	– Baltic-Pontic Studies, Poznań.
JIES	– The Journal of Indo-European Studies, Berkeley.
KSIA	– Kratkiye soobshcheniya Instituta Arkheologii, Moskva.
KSIA AN USSR	– Kratkiye soobshcheniya Instituta Arkheologii AN USSR, Kiev.
MIA	– Materialy i issledovaniya po arkheologii, Moskva.
SA	– Sovetskaya Arkheologia, Moskva.

REFERENCES

- Antoniewicz W.
1938 Z dziedziny archeologii ziem Polski. *Światowit* 17 (1936): 341-422.
- Arkheologiya
1985 *Arkheologiya Ukrainiskoy SSR*, 2nd edition, vol.1. Kiev.
- Artemenko I.
1985 Srednedneprovskaya kultura. In: *Arkheologiya Ukrainiskoy SSR*, vol.1, 364-375. Kiev.
1987 Kultury rannego bronzovogo veka yuzhnoy polosy lesov Evropeyskoy chasti SSSR. In: *Epokha bronzы lesnoy polosy SSSR*, 35-51. Moskva.
- Äyräpää A.
1933 Über die Streitaxtkulturen in Russland. *Eurasia Septentrionalis Antiqua* 8: 1-160.
- Beier H.J.
1988 *Die Kugelamphorenkultur im Mittelbe-Saale-Gebiet und in der Altmark*. Veröffentlichungen des Landesmuseums für Vorgeschichte in Halle, Band 41. Berlin.
- Berezanskaya S.
1975 Neolitieskaya stoyanka u khut. Grischevka na Sredney Desne. *SA* 2: 148-167.
- Berezanskaya S., N. Bondar
1964 Poselennya epokhi rannoy bronzы v Kanevi. *Archeologiya* 17: 32-51.
- Berezanskaya S., V. Pyasetskiy
1979 Pershe poselennya kultury kulyastykh amfor na Ukraini. *Archeologiya* 30: 75-82.

- Bondar N.
1974 *Poseleniya Srednego Podneprovya epokhi ranney bronzy*. Kiev.
- Bratchenko S.
1977 K voprosu o slozheni babinskoy kultury mnogovalikovoy keramiki. In: *Vilnyanskiye kurgany v Dneprovskom Nadporozhye*, 21-42. Kiev.
- Bratchenko S., O. Shaposhnikova
1985 Katakombnaya kulturno-istoricheskaya obshchnost. In: *Arkheologiya Ukrainskoy SSR*, vol.1, 403-420. Kiev.
- Breunig P.
1987 *14C – Chronologie des vorderasiatischen, südost- und mitteleuropäischen Neolithikums*. Köln-Wien.
- Bryusov A.
1952 *Ocherki po istorii plemen evropeyskoy chasti SSSR v neolicheskuyu epokhu*. Moskva.
- Charniauski M.M. (Cherniavski M.M.)
1969 Pogrebeniye bronzovogo veka vozle m.Kuranets. In: *Tezisy dokladov k konferentsii po arkheologii Belarusii*, 59-62. Minsk.
1972 Mogilnik na Rosi. In: *Pomniki gistory i kultury Belarusi 4*.
1979 *Neolit Belaruskaga Paniamonnya*. Minsk.
1987a Kamenniy i bronzoviy veka Poniemanya i Podvinya. In: *Belorusskaya Arkheologiya*, 37-48. Minsk.
1987b The Neolithic in north-western Byelorussia. In: T.Wiślański (Ed.) *Neolit i poczatkii epoki brązu na ziemi chełmińskiej*, 429-440. Toruń.
1992 Mogilniki kultury sharapadobnykh amfar na Grodzenshchynie. In: *Z glybi vyakov. Nash Kray*, 5-15. Minsk.
1995 BY 1 Krasnaselsky, Grodna Province. By 2 Karpautsy, Grodna Province. Ancient flint mines in Belarus. *Archaeologia Polona* 33: 263-269.
- Charniausky M.M., V.Y. Kudrashov, V.L. Lipnitskaya
1996 *Starazhytniya shakhtsory na Rosi*. Minsk.
- Chernysh E.K.
1982a Eneolit Pravoberezhnoy Ukrainy i Moldavii. In: *Eneolit SSSR*, 166-252. Moskva.
1982b Pamyatniki sinchronnykh Tripolyu kultur Yugo-Zapada SSSR. In: *Eneolit SSSR*, 253-263. Moskva.
- Childe V.G.
1925 *The Dawn of European Civilization*. London.
1930 *The Danube in Prehistory*. Oxford.
- Czebreszuk J.
1990 Late horizon of the Globular Amphorae culture versus other cultural structures of the Neolithic-Bronze Age interstage. Problem of system disintegration. In: *New tendencies in studies of Globular Amphora culture*. Archaeologia Interregionalis 14, 113-136. Warszawa-Kraków-Poznań.

Czebreszuk J., P. Makarowicz

- 1993 The problem of amber buttons with V-shaped perforation in the Bell Beaker culture. In: *Actes du XIIe Congrès International des Sciences Préhistoriques et Protohistoriques*, 1-7 Septembre 1991, vol.2, 529-532. Bratislava.

Dergachev V.A.

- 1982 *Materialy raskopok arkheologicheskoy ekspeditsii na Srednem Prute (1975-1976)*. Kishinev.

- 1986 *Moldavia i sosedniye territorii v epokhu bronzy*, Kishinev.

Dergachev V.A., I.V. Manzura

- 1991 Evropeyskiy komponent maykopskoy kultury v kontekste vzaimosvyazyey tsentralno- i vostochnoevropeyskikh obshchnostey. In: *Maykopskiy fenomen v drevney istorii Kavkaza i Vostochnoy Evropy*, 55-58. Leningrad.

Dinu M.

- 1960 K voprosu o kulture sharovidnykh amfor na territorii Moldavii. *Dacia* 4: 89-106.

Dolukhanov P.M., A.M. Miklayev

- 1979 Kulturno-istoricheskiye osnovy postroyeniya absolutnoy khronologii neolita i ranney bronzy v bassejne Zapadnoy Dviny. *KSIA* 157: 73-81.

Dolukhanov P.M., Tretyakov V.P.

- 1979 Dnepro-donetskiy neolit i kultura voronkovidnykh kubkov k severu ot Karpat. *AAC* 19: 37-50.

Gereta I.P.

- 1970 Noviye nakhodki kultury sharovidnykh amfor v zapadnom Podolye. *AO 1969 goda*, 231. Moskva.

Gereta I.P., E.A. Kharitonov

- 1970 Doslidzhennya novykh arkheologichnykh pamyatok v Zakhidnomu Podilli. In: *Materialy Tryetyoy Podilskoy Istoriko-Krayeznavchoy Konferentsii*, 153-158. Lviv.

Gimbutas M.

- 1956 *The Prehistory of Eastern Europe*, vol. 1, Cambridge.

- 1977 The First Wave of Eurasian Steppe Pastoralists into Copper Age Europe. *JIES* 4: 277-339.

- 1980 The Kurgan Wave #2 (c. 3400-3200 BC) into Europe and the Following Transformation of Culture. *JIES* 8: 273-315.

- 1985 East Baltic Amber in the Fourth and Third Millennium B.C. *Journal of Baltic Studies* 16(3): 231-256.

- 1991 *The Civilization of the Goddess. The World of Old Europe*, San Francisco.

Głósik J.

- 1968 Kultura strzyżowska. *Materialy Starożytność* 11:7-114.

Gorodtsov V.

- 1915 Kultury bronzovoy epokhi v Sredney Rossii. In: *Otchet istoricheskogo muzeya za 1914 g.* Moskva.

- Gurba J.
1957 Materiały do badań nad neolitem Małopolski. *Annales UMCS Sectio F* (1954) 9: 129-178.
- Gurina N.N.
1976 *Drevniye kremnedobyvayushchiye shakhty na territorii SSSR*. Leningrad.
- Halicki M.
1970 Cmentarzyska kultury amfor kulistych i kultury pucharów lejkowatych w Klementowicach, pow. Puławy na stanowisku IV. *Wiadomości Archeologiczne* 35(3): 303-325.
- Haüsler A.
1964 Die Gräber der ältesten Ackerbauern in der Ukraine. *Wissenschaftliche Zeitschrift der Martin-Luther Universität Halle-Wittenberg* 12(11/12).
1966 Die Gräber der Kugelamphorenkultur in Wolhynien und Podolien und die Frage ihres Ursprungs. *Jahresschrift für mitteldeutsche Vorgeschichte* 50: 115-140.
1974 Die Bestattungssitten des Früh- und Mittelneolithikums und ihre Interpretation. In: F.Schlette (Ed.) *Evolution und Revolution im Alten Orient und Europa*, 101-119. Berlin.
1989 Zur Problematik des Bestattungsrituals im Äneolithikum Mitteleuropas. In: *Das Äneolithikum und die früheste Bronzezeit (ca 3000-2000 BC)*. *Præhistorica* 15:163-166. Praha.
1994 Die Majkop-Kultur und Mitteleuropa. *Zeitschrift für Archäologie* 28: 191-246.
- Hensel W.
1974 *Ur- und Frühgeschichte Polens*. Berlin.
- Jahn A.
1956 *Wyżyna Lubelska. Rzeźba i czwartorzęd*. Warszawa.
- Jastrzębski S.
1989 *Kultura Cucuteni-Trypole i jej osadnictwo na Wyżynie Wołyńskiej*. Lublin.
- Kadrow S.
1995 Absolute chronology of the Sofievka type in the light of "wiggle matching" analysis. In: *Cemeteries of the Sofievka type: 2950-2750 BC*, BPS 3:141-147.
- Kadrow S., A. Kośko, M. Videiko
1995 Pottery stylistics of the Sofievka type, genetic-cultural qualification. In: *Cemeteries of the Sofievka type: 2950-2750 BC*, BPS 3:200-213.
- Kalechyts E.G.
1987 *Pamyatniki kamennogo i bronzovogo vekov Vostochnoy Belorussii*. Minsk.
- Kavalskaya K., M. Charniauski
1988 Starazhitnaye pakhavannye. In: *Pomniki gistorii kultury Belarussii*, 17-18. Minsk.

Kempisty E.

- 1971 Kultura amfor kulistych na Mazowszu i Podlasiu. *Materiały Starożytne i Wczesnośredniowieczne* 1: 7-34.

Kirkowski R.

- 1984 Z badań nad recepcją tradycji kulturowych strefy nadczarnomorskiej wśród społeczeństw Nizy Polski u schyłku III tysiąclecia p.n.e. *Archeologia Polski* 29(1): 57-67.

Kirkowski R., J. Sosnowska

- 1987 Kultura amfor kulistych na ziemi chełmińskiej. In: T. Wiślański (Ed.) *Neolit i początki epoki brązu na ziemi chełmińskiej*, 185-200. Toruń.

Kiyashko V.Y.

- 1974 *Nizhneye Podonye v epokhu eneolita i ranney bronzы*. Avtoreferat dissertatsii na soiskaniye uchenoy stepeni kandidata istoricheskikh nauk. Moskva.

- 1994 Mezhdru kamnem i bronzoy. Nizhneye Podonye v V-II tys. do n.e. *Donskiye drevnosti* 3:8-129. Azov.

Kiyashko V.Y., A.V. Kiyashko

- 1992 K voprosu o svyazyakh plemen Podonya-Priazovya i Kavkaza v bronzovom veke. In: *Istoricheskaya geografia Dona i Severnogo Kavkaza*, 3-8. Rostov.

Kokowski A., W. Koman

- 1984 Badania ratownicze na terenie gmin Hrubieszów i Horodło w woj. zamojskim. In: *Sprawozdania z badań terenowych Archeologicznego Ośrodka Badawczo-Konserwatorskiego w Lublinie w 1984r.*, 19. Lublin.

- 1985 Świerszczów, gm. Hrubieszów, woj. zamojskie, stanowisko 27. *Informator Archeologiczny*. Badania 1984, 38. Warszawa.

Kokowski A., J. Ścibior

- 1990 Bemerkungen zur regionalen Gliederung der Kugelamphorenkultur in Polen. *Acta Praehistorica et Archaeologica* 22: 37-55.

Kossinna G.

- 1910 Der Ursprung der Urfinnen und der Urindogermanen und ihre Ausbreitung nach Osten. *Mannus* 2: 59-108.

Kostrzewski J.

- 1948 Od mezolitu do okresu wędrówek ludów. In: *Prehistoria ziem polskich* (ed. 1939-1948), 118-359. Kraków.

Kośko A.

- 1979 *Rozwój kulturowy społeczeństw Kujaw w okresach schyłkowego neolitu i wczesnej epoki brązu*. Poznań.

- 1981 *Udział południowo-wschodnioeuropejskich wzorców kulturowych w rozwoju niżowych społeczeństw kultury pucharów lejkowatych*. Poznań.

- 1985 Influences of the "pre-Yamnaya" ("pre-pitgrave") communities from the Black Sea steppe area in western European cultures. In: *L'énéolithique et le début de l'âge de bronze dans certain régions de l'Europe*, 57-72. Wrocław-Warszawa-Kraków-Gdańsk-Łódź.

- 1990 The Migration of Steppe and Forest-steppe Communities into Central Europe. *JIES* 18(3-4): 309-329.
- 1991 The Vistula-Oder basins and the North Pontic region. *JIES* 19(3-4):235-257.
- Kovaleva I.F.
- 1978 Pogrebeniya zhivotilovskogo tipa v Prisamarye. In: *Kurganniye drevnosti stepnogo Podneprov'ya II-I tys. do n.e.*, 2:45-55. Dnepropetrovsk.
- 1991 Pogrebeniya s maykopskim inventarem v Levoberezh'yi Dnepra (k vydele-niyu zhivotilovskogo kulturnogo tipa). In: *Problemy arkheologii Podneprov'ya*, 69-88. Dnepropetrovsk.
- Kovalyukh N., M. Videiko, V. Skripkin
- 1995 Chronology of the cemeteries of the Sofievka type: archaeological and isotopic one. In: *Cemeteries of the Sofievka type: 2950-2750 BC*, BPS 3: 135-140.
- Kowalczyk J.
- 1968 Dwa zespoły neolityczne datowane radiowęglem. *Wiadomości Archeologiczne* 33: 372.
- Kowalski A.
- 1988 Mit w obrzędzie pogrzebowym. Próby etnograficznej analizy materiału archeologicznego. *Lud* 72: 113-126.
- Kozłowski L.
- 1921 Groby megalityczne na wschód od Odry. *Prace i Materiały Antropologiczno-Archeologiczne i Etnograficzne* 2.
- 1924 *Młodsza epoka kamienna w Polsce*, Lwów.
- 1939 *Zarys pradziejów Polski południowo-wschodniej*, Lwów.
- Kruk J.
- 1980 *Gospodarka w Polsce południowo-wschodniej w V-III tysiącleciu p.n.e.* Wrocław-Warszawa-Kraków-Gdańsk.
- 1993 Rolnictwo pierwotne jako czynnik kształtowania krajobrazu. *Sprawozdania Archeologiczne* 43: 301-308.
- Kukawka S., J. Sosnowska
- 1994 Z badań nad kulturą amfor kulistych na ziemi chełmińskiej. In: *Neolit i początki epoki brązu na ziemi chełmińskiej*, 199-204. Grudziądz.
- Kukhareno Y.V.
- 1969 *Arkheologiya Polshy*. Moskva.
- Levickiy I.F.
- 1929 Pamyatki megalitichnoy kultury na Volini. *Antropologija* 2: 192-222.
- 1930 Domovina kinca neolitichnoy dobi na poberezh'yu serednoy techi r. Sluchi (c. Kolodyazhnoye na Volini). *Zapiski vseukraïnskogo arkheologichnogo komitetu* 1: 159-178.

Loze I.

- 1988 *Poseleniya kamennogo veka Lubanskoj Niziny. Mezolit, rannij i srednij neolit.* Riga.

Machnik J.

- 1978 Wczesny okres epoki brązu. In: *Prahistoria ziem polskich. III. Wczesna epoka brązu*, 9-136. Wrocław-Warszawa-Kraków-Gdańsk.
- 1979a Krąg kulturowy ceramiki sznurowej. In: *Prahistoria ziem polskich. II. Neolit*, 337-411. Wrocław-Warszawa-Kraków-Gdańsk.
- 1979b Ze studiów nad kulturą ceramiki sznurowej w dorzeczu górnego Dniestru. *AAC* 19: 51-71.
- 1987 *Kultury z przelomu eneolitu i epoki brązu w strefie karpackiej.* Wrocław-Warszawa-Kraków-Gdańsk-Łódź.

Maksimenko V.E.

- 1973 Noviye materialy po epokhe ranney bronzy na Nizhnem Donu. *SA* 1: 24-27.

Maleyev Y.M.

- 1971 Megalitichni grobnitsy na Ternopilshchini. *Arkheologiya* 2: 53-67.
- 1980 Vostochniye rubiezhy rasprostraneniya kultury sharovidnykh amfor. In: *Problemy eneolita stepnoy i lesostepnoy polosy Vostochnoy Evropy. Tezisy dokladov*, 30-31. Orenburg.
- 1986 Pokhovannya kulturi kulyastikh amfor na Khmielnichchini. *Visnik Kii-vskogo Universitetu. Istorichni Nauki* 28:98-103.

Maleyev Y.M., V.I. Yakubovskiy

- 1974 Raskopki grobnitsy kultury sharovidnykh amfor na Yuzhnom Buge. *AO* 1973 goda, 305.

Mallory J.P.

- 1991 *In Search of the Indo-Europeans. Language, Archaeology and Myth.* London.

Malyukevich A.E., V.G. Petrenko

- 1993 Usatovskiy kompleks s figurnymi pronizyami iz kurgana v nizovyakh Dnestra. In: *Drevneye Prichernomorye*, 25-30. Odessa.

Manzura I.

- 1990a O rasprostranienii gordineshtskikh kulturnykh elementov v Severnom Prichernomorye. In: *Arkheologicheskiye issledovaniya molodykh uchenykh Moldavii*, 25-39. Kishinev.
- 1990b *Perehodniy period ot eneolita k epokhe bronzy v Nizhnem Podniestrovye i Popruye.* Avtoreferat dissertatsii na soiskaniye uchenoy stepeni kandidata istoricheskikh nauk. Kishinev.
- 1992 Stepniye vostochnoevropeyskiye obshchnosti eneolitaranney bronzy v khronologicheskoy sisteme Balkano-Dunayskikh kultur. In: *Materialy i issledovaniya po arkheologii i etnografii Moldovy*, 87-101. Kishinev.
- 1993 The east-west interaction in the mirror of the eneolithic and early bronze cultures in the Northwest Pontic. *Revista Arheologica* 1: 23-53.

- 1994 Cultural groups from the steppes of Eastern Europe in the Eneolithic period and Early Bronze Age. *Oxford Journal of Archaeology* 13(3): 265-277.
- Manzura I., E. Klochko, E. Savva
1992 *Kamenskiye kurgany*. Kishinev.
- Manzura I., E. Savva, L. Bogataya
1995 East-West Interactions in the Eneolithic and Bronze Age Cultures of the North-West Pontic Region. *JIES* 23(1-2): 1-51.
- Mazurowski R.F.
1983 Bursztyn w epoce kamienia na ziemiach polskich. *Materiały Starożytne i Wczesnośredniowieczne* 5: 7-130.
- Miclea I., R. Florescu
1980 *Preistoria Daciei*. Bucuresti.
- Miklayev A.M.
1992 *Kamenniy-zhelezniy vek v mezhdureche Zapadnoy Dviny i Lovati*. Avtoreferat dissertatsii na soiskaniye uchenoy stepeni doktora istoricheskikh nauk. Sankt Petersburg.
- Movsha T.G.
1972 Periodizatsiya i khronologiya serednogo ta piznogo Tripilla. *Arkheologiya* 5: 3-24.
1984 Khronologiya Tripolya-Cucuteni i stepnyye kultury epokhi rannego metalla v yeye sisteme. In: *Problemy arkheologii Podnieprovya*, 60-83. Dnepropetrovsk.
1985a Pozdnyy etap tripolskoy kultury. In: *Arkheologiya Ukrainskoy SSR*, vol. 1, 223-263. Kiev.
1985b Vzaemovidnosyny Tripilla-Kukuteni s sinkhronnymi kulturami Tsentralnoy Evropy. *Arkheologiya* 51: 22-31.
1993 Vzaemovidnosyny stepovykh i zemlerobskikh kultur v epokhu eneolitara-ranniego bronzovogo viku. *Arkheologiya* 3: 36-51.
- Nagel E.
1985 *Die Erscheinungen der Kugelamphorenkultur im Norden der DDR*. Berlin.
- Nechytailo A.L.
1991 *Svyazi naseleniya stepnoy Ukrainy i Severnogo Kavkaza v epokhu bronzy*. Kiev.
- Neustupny E.
1966 Kugelamphorenkultur. In: J.Filip (Ed.) *Enzyklopädisches Handbuch zur Ur- und Frühgeschichte Europas*, Band 1, 652-653. Praga.
- Nikolayeva N.
1981 Periodizatsiya kubano-terskoy kultury. Istoricheskiye sudby KTK v katakombnyu epokhu. In: *Katakombniye kultury Severnogo Kavkaza*, 77-100. Ordzhonikidze.

Nikolayeva N., V. Safronov

- 1974 Proiskhozhdeniye dolmennoy kultury Severo-Zapadnogo Kaukaza. In: *Voprosy okhrany, klassifikatsii i ispolzovaniya arkheologicheskikh pamyatnikov*, 174-198. Moskva.

Nosek S.

- 1955 Kultura amfor kulistych na Lubelszczyźnie. *Annales UMCS Sectio F* (1954-1955) 5:55-158.
1967 *Kultura amfor kulistych w Polsce*. Wrocław-Warszawa-Kraków.

Optołowicz J., Z. Ślusarski

- 1962 *Muzeum w Krasnymstawie. Archeologia, historia, kultura ludowa (katalog)*. Lublin.

Passek T.S.

- 1945 Selishcha epokhi bronzy v rayone Kaneva. *Kratkiye Soobshcheniya Instituta Istorii Materialnoy Kultury* 25:14-28. Kiev.
1949 *Periodizatsiya tripolskikh poseleniy*. MIA 10.

Peleshchynshyn M.A.

- 1976 Raskopki na Volini. *AO 1975 goda*, 376. Moskva.

Petrenko V.G.

- 1989 Pamyatniki eneolita i povorot epokhi k bronzovomu veku v Severno-Zapadnom Prichernomor'ye. In: *Istoriya i arkheologiya Nizhnego Podunavya*, 18-19. Reni.

Popandopulo Z.H.

- 1992 Pervomayskiy kurgannyj mogilnik u s. Primorskoye. *Drevnosti stepnogo Prichernomor'ya i Kryma* 3: 82-98.

Popova T.

- 1955 *Katakombnaya kultura*. Moskva.

Prinke D., M. Szmyt

- 1996 Ze studiów nad problematyką regionalizacji kulturowej w późnym neolicie na Kujawach. In: A. Kośko (Ed.) *Z badań nad genezą regionalizmu kulturowego społeczeństw Kujaw*, 39-60. Poznań-Kruszwica-Inowrocław.

Rassamakin Y.Y.

- 1986 Eneolitieskiye pogrebeniya r. Molochnoy i ikh otnositelnaya khronologiya. In: *Khozyaystvo i kultura doklasovykh i ranneklasovykh obshchestv*, 121-122. Moskva.
1987a Eneolitieskiye pograbeniya basseyna r. Molochnoy. In: *Drevneyshiy skotovody stepy yuga Ukrainy*, 31-43. Kiev.
1987b K probleme izucheniya eneolitieskikh podkurgannykh pograbeniy. In: *Aktualniye problemy istoriko-arkheologicheskikh issledovaniy*, 138-139. Kiev.
1988 Otnositelnaya khronologiya pozdneeneolitieskikh pogrebeniy basseyna r. Molochnoy. In: *Noviye pamyatniki yamnoy kultury stepnoy zony Ukrainy*, 14-27. Kiev.

- 1991 O sootnoshenii stepnykh i novosvobodnenskiikh pamyatnikov. In: *Maykopskiy fenomen v drevney istorii Kavkaza i Vostochnoy Evropy*, 52-55. Leningrad.
- 1993 Eneolit stepnogo Prichernomor'ya i Priazov'ya (po pogrebalnym pamyatnikam). In: *The Fourth Millennium B.C.*, 5-28. Sofia.
- 1994 The main directions of the development of early pastoral societies of the Northern Pontic zone: 4500–2450 BC (Pre-Yamnaya cultures and Yamnaya culture). In: *Nomadism and pastoralism in the circle of Baltic-Pontic early agrarian cultures: 5000–1650 BC*, BPS 2: 29-70.
- 1996 Pozdneeneoliticheskiye komplekсы na Ingultse v svete novykh issledovaniy (in press).
- Rassamakin Y.Y., A. Kubyshev
- 1990 Ob odnoy gruppe pozdneeneoliticheskikh pogrebeniy v Priazov'ye s elementami tripolskoy kultury. In: *Rannezemledielcheskiye poseleniya-giganty tripolskoy kultury na Ukraine*, 72. Talyanki-Veseliy Kut-Majdanetskoye.
- Renfrew C.
- 1987 *Archaeology and Language. The Puzzle of Indo-European Origins*. London.
- Rezepkin A.D.
- 1987 K interpretatsii rospisi iz grobnitsy maykopskoy kultury bliz stanitsy Novosvobodnaya. *KSI* 192: 26-33.
- 1989 *Severo-Zapadnyy Kavkaz v epokhu ranney bronzy (po materialam pogrebeniy novosvobodnenskogo tipa)*. Avtoreferat dissertatsii na soiskaniye uchenoy stepeni kandidata istoricheskikh nauk. Leningrad.
- 1991 Kurgan 31 mogilnika "Klady". Problemy genezisa i khronologii maykopskoy kultury. In: *Drevniye kultury Prikubanya*, 167-197. Leningrad.
- Rimantiené R.
- 1992a The Neolithic of the Eastern Baltic, *Journal of World Prehistory* 6(1): 97-143.
- 1992b Neolithic hunter-gatherers at Šventoji in Lithuania. *Antiquity* 66: 367-376.
- Rimantiené R., G. Česnys
- 1990 The late Globular Amphora Culture and its Creators in the East Baltic Area from Archaeological and Antropological Points of View. *JIES* 18(3-4): 339-358.
- Rumjancev A.N.
- 1974 Geneza kultury środkowodnieprzańskiey i jej związki ze strefą karpacką. *AAC* 14: 57-67.
- Safronov V.A.
- 1989 *Indoeuropeyskiye prarodiny*. Gorkiy.
- Serdyukova I.L.
- 1989 K voprosu ob izmenenii granits rasseleniya katakombnykh plemen. In: *Problemy istorii ta arkheologii davnego naselennya Ukrainskoy RSR*, 206-207. Odessa.

- 1994 Plemena katakombnoy kultury Nadporozhya i Lesostepnogo Podneprovya (manuscript). Kiev.
- Serova H.L., E.V. Yarovoy
1987 *Grigoryopolskiye kurgany*. Kishinev.
- Shaposhnikova O.
1971 O kulturnoy prinadlezhnosti poseleniy epokhi ranney bronzы Stepnogo Pridneprovya. *Materialy po archeologii Severnogo Prichernomor'ya* 7: 28-42. Odessa.
- Shcheglova V.V., Cherniavski M.M.
1976 Fauna iz mogilnikov kultury sharovidnykh amfor u pos. Krasnoselski Volkovytskogo rayona. In: *Doklady AN BSSR* 20(7): 627-629.
- Shchepinsky A.A.
1985 Kemi-obinskaya kultura. In: *Arkheologiya Ukrainskoy SSR*, vol.1, 331-336. Kiev.
- Shilov I.
1988 "Grot byka" po materialam drevneyshikh kurganov. In: *Noviye pamyatniki yamnoy kultury stepnoy zony Ukrainy*, 42-59. Kiev.
- Shmagliy N.M.
1966 Grodsko-volynskiy variant piznotripil'skoy kultury. *Arkheologiya* 20: 15-37.
- Shmidt E.A.
1992a Mogilnik kultury kulyastykh amfor poblizu Smolenska u verkhivnykh Dni-pra. *Arkheologiya* 2: 120-124.
1992b Pogrebalniy kompleks kultury sharovidnykh amfor v verkhovnykh Dnepra. *Rossiyskaya Arkheologiya* 4: 156-162.
- Skibiński S.
1958 Znalezisko zabytków kultury amfor kulistych w Stadarni, pow. Chełm. *Wiadomości Archeologiczne* 24(4): 384-385.
- Sobczuk E.
1994 Najciekawsze odkrycia archeologiczne z Krasnegostawu i okolic. In: *Zapiski Krasnostawskie*, 9-18. Lublin.
- Stuiver M., P.J. Reimer
1993 Radiocarbon Calibration Program, ver. 3.0.3, University of Washington, Quaternary Isotope Lab. *Radiocarbon* 35: 215-230.
- Subbotin L.V.
1982 Dva kurgana epokhi bronzы v Bugo-Dnestrovskom mezhdurechie. In: *Arkheologicheskiye pamyatniki Severo-Zapadnogo Prichernomor'ya*, 100-110. Kiev.
1988 Megaliticheskoye pogrebeniye u s. Tatarbunary. In: *Noviye pamyatniki yamnoy kultury stepnoy zony Ukrainy*, 124-130. Kiev.
- Sulimirski T.
1959 *Polska przedhistoryczna*, t. 2, (1957-1959), Londyn.

- 1968 *Corded Ware and Globular Amphorae North-East of the Carpathians*, Londyn.
- 1970 *Prehistoric Russia*. An outline, Londyn.
- Sveshnikov I.K.
- 1957 *Megalitychni pokhovannya na Zakhidnomu Podilli*. Lviv.
- 1971 Kultura kulyastykh amfor. In: *Arkheologiya Ukrainskoy RSR*, vol. 1, 240-250. Kiev.
- 1973 Noviye pokhovannya kultury kulyastykh amfor u Rovenskiy oblasti. *Arkheologiya* 11: 69-72.
- 1974 *Istoriya naselennya Peredkarpattya, Podilla i Volini v kinci III — na pochatku II tis. do n.e.* Kiev.
- 1983 *Kultura sharovidnykh amfor*. Svod arkheologicheskikh istochnikov V1-27. Moskva.
- 1985a Kultura sharovidnykh amfor. In: *Arkheologiya Ukrainskoy SSR*, vol. 1, 280-291. Kiev.
- 1985b Gorodoksko-zdolbitskaya kultura na Volini. In: *Arkheologiya Ukrainskoy SSR*, vol. 1, 381-384. Kiev.
- 1990 Kultura sharovidnykh amfor. In: *Arkheologiya Prikarpatya, Volini i Zakarpattya (eneolit, bronz a i ranneye zhelezo)*, 43-49. Kiev.
- Sveshnikov I.K., Nikolchenko Y.M.
- 1982 *Dovidnyk z arkheologii*. Rovenska oblast. Kiev.
- Szmyt M.
- 1996 *Spolecznosci kultury amfor kulistych na Kujawach*, Poznań.
- Sztandar Ludu
- 1961 Ciekawe odkrycie archeologiczne w Łopienniku Dolnym. *Sztandar Ludu* (21.II.1961) nr 44 (5284). Lublin.
- Ścibior J.
- 1986 [rec.] Igor K. Svešnikov, Kultura šarovidnych amfor. *Sprawozdania Archeologiczne* 38: 348-365.
- 1991 Kultura amfor kulistych w środkowowschodniej Polsce. Zarys problematyki. In: J.Gurba (Ed.) *Schylek neolitu i wczesna epoka brązu w Polsce środkowowschodniej*, 47-65. Lublin.
- 1993 Die Trichterbecherkultur und die Tripolje-kultur auf der Wolynien-Hohebene. In: *Actes du XIIIe Congrès International des Sciences Préhistoriques et Protohistoriques*, 1-7 Septembre 1991, vol.2, 522-528. Bratislava.
- Ścibior J., A. Kokowski, W. Koman
- 1991 Zespoły grobowe kultury amfor kulistych z zachodniej części Wyżyny Wołyńskiej. *Sprawozdania Archeologiczne* 43: 79-108.
- Ścibior J., J.M.Ścibior
- 1990 Sandomierz 78 — wielokulturowe stanowisko z przełomu neolitu i epoki brązu. Badania ratownicze w 1984 roku. *Sprawozdania Archeologiczne* 42: 157-201.

Świeżyński K.

- 1966 Szczałki kostne z grobów zwierzęcych kultury amfor kulistych na Kujawach. In: Wiślański T., *Kultura amfor kulistych w Polsce północno-zachodniej*, 268-278. Wrocław-Warszawa-Kraków.

Tallgren A.

- 1926 La Pontide prescythique apres l'introduction des metaux. *Eurasia Septentrionalis Antiqua* 7: 5-246.

Telegin D.Y.

- 1971 Eneolitychni stely i pamyatky nizhniomikhaylovskogo tipu. *Arkheologiya* 4: 32-54.
1977 Ob absolutnom vozraste yamnoy kultury i nekotoriye voprosy khronologii eneolita yuga Ukrainy. *SA* 2: 5-19.

Terskiy S.V.

- 1993 Novi pamyatky pivnichno-zakhidnogo porubizh Trypils'koy kultury. In: *Trypilska kultura Ukrainy. Tezy dopovidey i povidomlen mizhnarodnoy konferentsii*, 64-66. Lviv.

Terskiy S., V. Terskiy

- 1994 Litopysna Peresopnitsa abo pry zabute misto nad Stublou. *Rodovid* 7: 47-53.

Toshchev G.N.

- 1991 Zapadniy areal pamyatnikov katakombnoy kultury. In: *Katakombnyye kultury Severnogo Prichernomor'ya*, 85-100. Kiev.

Weninger B.

- 1986 High-Precision Calibration of Archaeological Radiocarbon Dates. *Acta Interdisciplinaria Archaeologica* 4: 11-53. Nitra.

Wieliczko M.

- 1961 Łopiennik Dolny Kolonia, pow. Krasnystaw. *Z Otchłani Wieków* 27(3): 232.

Wiślański T.

- 1966 *Kultura amfor kulistych w Polsce północno-zachodniej*. Wrocław-Warszawa-Kraków.
1970 The Globular Amphora Culture. In: *The Neolithic in Poland*, 179-231. Wrocław-Warszawa-Kraków.
1979 Dalszy rozwój ludów neolitycznych. Plemiona kultury amfor kulistych. In: *Prahistoria ziem polskich, II. Neolit*, 261-299. Wrocław-Warszawa-Kraków-Gdańsk.

Yarovoy E.V.

- 1979 Nakhodka sharovidnykh amfor v Moldavii. In: *Problemy epokhi bronzy Yuga Vostochnoy Evropy*, 35. Donetsk.
1981 Pamyatniki yamnoy kultury Pruto-Dnestrovskogo mezhdurech'ya. In: *Aktualniye problemy arkheologicheskikh issledovaniy v Ukrain'skoy SSR*, 33-34. Kiev.
1985 *Drevneyshiy skotovodcheskiy plemena Yugo-Zapada SSSR*. Kishinev.
1990 *Kurgany eneolita — epochi bronzy Nizhnego Podnestrovyia*. Kishinev.

Yelagina N., V.G. Petrenko

1968 Otchet ob arkheologicheskikh raskopkach, proizvedennykh Inguletskoy stepnoy ekspeditsey letom 1968 goda. (Nauchniy arkhiv Instituta Arkheologii Akademii Nauk Ukrainy, N 1968/54). Kiev.

Zaginailo A.I., I.T. Chernyakov, V.G. Petrenko

1987 Karolino-Bugazskiy mogilnik. In: *Noviye issledovaniya po arkheologii Severnogo Prichernomorya*, 99-108. Kiev.

Zakharuk Y.N.

1962 Voprosy khronologii kultur eneolita i ranney bronzy Prikarpatya i Volini. *KSI A AN USSR* 12: 48-52.

1971 Tripilska kultura. In: *Arkheologiya Ukrainskoy RSR*, vol. 1, 177-179. Kiev.

Zbenovich V.I.

1972 Khronologiya piznogo Tripilla. *Arkheologiya* 7: 3-25.

1976 Pozdneye Tripolye i yego svyaz s kulturami Prikarpatya i Malopolshi. *AAC* 16: 21-58.

1987 Mesto tripolskoy kultury v eneolite Prichernomorya. In: *Kavkaz v sistemie paleometallicheskih kultur Evrazii*, 109-119. Tbilisi.

Zhivopisnaya Rossiya

1882 Zhivopisnaya Rossiya. Litovskoye i belorusskoye Polesye. Sankt-Peterburg-Moskva.

LIST OF AUTHORS

Mikhail M. Charniauski
Institute of History
Academy of Sciences of Belarus
Minsk 220072
F. Skaryna Str. 1
Belarus

Stanisław Gołub
22-100 Chełm
Powstańców Warszawy Str. 3/26
Poland

Sławomir Kadrow
Institute of Archaeology and Ethnology
Polish Academy of Sciences
31-016 Kraków
Sławkowska Str. 19
Poland

Wiesław Koman
State Service of Preservation of Monuments
22-400 Zamość
Staszic Str. 29
Poland

Wanda Kozak-Zychman
Chair of Archaeology
Maria Curie-Skłodowska University
20-031 Lublin
M. Curie-Skłodowska Square 4
Poland

Mykola Kryvaltsevich
Institute of History
Academy of Sciences of Belarus
Minsk 220072
F. Skaryna Str. 1
Belarus

Yuriy Maleyev
Chair of Archaeology
State University
252033 Kiiv
Vladimirovskaya Str. 64
Ukraine

Yuriy Y. Rassamakin
Institute of Archaeology
Ukrainian Academy of Sciences
252014 Kiiv
Vydubitskaya Str. 40
Ukraine

Irina L. Serdyukova
Institute of Archaeology
Ukrainian Academy of Sciences
252014 Kiiv
Vydubitskaya Str. 40
Ukraine

Svyatoslav V. Shelomentsev-Terskiy
Museum of History
290038 Lviv-8
Rynok 6
Ukraine

Evgeniy A. Shmidt
214013 Smolensk
Kirova 15/19
Russia

Marzena Szmyt
Eastern Institute
Adam Mickiewicz University
61-734 Poznań
Nowowiejski Str. 55
Poland

Józef Ścibior
District Museum – Castle
22-600 Sandomierz
Poland

Vol.1: *Weapons of the tribes of the Northern Pontic zone in the 16th–10th centuries B.C.*, by Victor I. Klochko.

Vol.2: *Nomadism and pastoralism in the circle of Baltic–Pontic early agrarian cultures: 5000–1650 BC*, edited by Aleksander Koško

Vol.3: *Cemeteries of the Sofievka type: 2950–2750 BC*, edited by Aleksander Koško

Orders regarding B-PS should be addressed directly to the Editorial Office (Baltic-Pontic Studies, Institute of Prehistory, Św. Marcin 78, 61-809 Poznań, Poland).
--

The publication is carried out within the research project No 1 P108 067 04 financed in the years 1993-1995 by Committee for Scientific Research and supplied with funds of Ministry of National Education.

ISBN 83-86094-03-6

ISSN 1231-0344